



[Go to Product page](#)

Datasheet for ABIN2774048
anti-MTERFD2 antibody (C-Term)

1 Image

Overview

Quantity:	100 µL
Target:	MTERFD2
Binding Specificity:	C-Term
Reactivity:	Human, Mouse, Rat, Pig, Cow, Horse, Rabbit, Guinea Pig
Host:	Rabbit
Clonality:	Polyclonal
Conjugate:	This MTERFD2 antibody is un-conjugated
Application:	Western Blotting (WB)

Product Details

Sequence:	LERLGRYQTP DKKGQTQIPN PSLRNILRVS EAEFLARTAC SSVEEFQVFK
Predicted Reactivity:	Cow: 100%, Guinea Pig: 86%, Horse: 100%, Human: 100%, Mouse: 100%, Pig: 100%, Rabbit: 93%, Rat: 100%
Characteristics:	This is a rabbit polyclonal antibody against Mterfd2. It was validated on Western Blot.
Purification:	Affinity Purified

Target Details

Target:	MTERFD2
Alternative Name:	Mterfd2 (MTERFD2 Products)
Background:	The function of this protein remains unknown.

Target Details

Alias Symbols: 1810059A23Rik, 4933412H03Rik

Protein Size: 346

Molecular Weight: 38 kDa

Gene ID: 69821

NCBI Accession: [NM_178051](#), [NP_835152](#)

UniProt: [Q8BVN4](#)

Application Details

Application Notes: Optimal working dilutions should be determined experimentally by the investigator.

Comment: Antigen size: 346 AA

Restrictions: For Research Use only

Handling

Format: Liquid

Concentration: Lot specific

Buffer: Liquid. Purified antibody supplied in 1x PBS buffer with 0.09 % (w/v) sodium azide and 2 % sucrose.

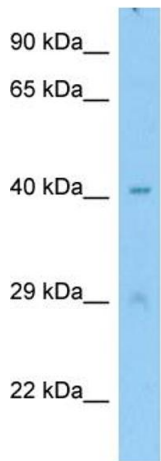
Preservative: Sodium azide

Precaution of Use: This product contains Sodium azide: a POISONOUS AND HAZARDOUS SUBSTANCE which should be handled by trained staff only.

Handling Advice: Avoid repeated freeze-thaw cycles.

Storage: -20 °C

Storage Comment: For short term use, store at 2-8°C up to 1 week. For long term storage, store at -20°C in small aliquots to prevent freeze-thaw cycles.



Host: Rabbit
Target Name: Mterfd2
Sample Tissue: Mouse Testis Lysate
Antibody Dilution: 1.0µg/ml

Western Blotting

Image 1. Host: Rabbit

Target Name: Mterfd2

Antibody Dilution: 1.0ug/ml

Sample Tissue: Mouse Testis