

Datasheet for ABIN2774049
anti-LYPD6 antibody (Middle Region)



[Go to Product page](#)

1 Image

1 Publication

Overview

Quantity:	100 µL
Target:	LYPD6
Binding Specificity:	Middle Region
Reactivity:	Human, Mouse, Rat, Dog, Horse, Cow, Guinea Pig, Pig, Rabbit
Host:	Rabbit
Clonality:	Polyclonal
Conjugate:	This LYPD6 antibody is un-conjugated
Application:	Western Blotting (WB)

Product Details

Immunogen:	The immunogen is a synthetic peptide directed towards the middle region of human LYPD6
Sequence:	RDSEHEGHKV CTSCCEGNIC NLPLPRNETD ATFATTSPIN QTNGHPRCMS
Predicted Reactivity:	Cow: 100%, Dog: 100%, Guinea Pig: 93%, Horse: 100%, Human: 100%, Mouse: 100%, Pig: 100%, Rabbit: 100%, Rat: 100%
Characteristics:	This is a rabbit polyclonal antibody against LYPD6. It was validated on Western Blot using a cell lysate as a positive control.
Purification:	Affinity Purified

Target Details

Target:	LYPD6
---------	-------

Target Details

Alternative Name:	LYPD6 (LYPD6 Products)
Background:	LYPD6 contains 1 UPAR/Ly6 domain. The exact function of LYPD6 is not known. Alias Symbols: MGC52057 Protein Size: 171
Molecular Weight:	19 kDa
Gene ID:	130574
NCBI Accession:	NM_194317, NP_919298
UniProt:	Q86Y78

Application Details

Application Notes:	Optimal working dilutions should be determined experimentally by the investigator.
Comment:	Antigen size: 171 AA
Restrictions:	For Research Use only

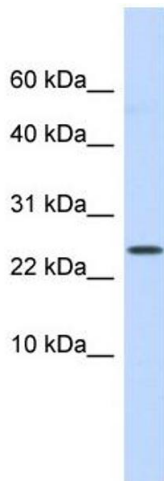
Handling

Format:	Liquid
Concentration:	Lot specific
Buffer:	Liquid. Purified antibody supplied in 1x PBS buffer with 0.09 % (w/v) sodium azide and 2 % sucrose.
Preservative:	Sodium azide
Precaution of Use:	This product contains Sodium azide: a POISONOUS AND HAZARDOUS SUBSTANCE which should be handled by trained staff only.
Handling Advice:	Avoid repeated freeze-thaw cycles.
Storage:	-20 °C
Storage Comment:	For short term use, store at 2-8°C up to 1 week. For long term storage, store at -20°C in small aliquots to prevent freeze-thaw cycles.

Publications

Product cited in:	Arvaniti, Jensen, Soni, Wang, Klein, Thiriet, Pinborg, Muldoon, Wienecke, Imad Damaj, Kohlmeier, Gondré-Lewis, Mikkelsen, Thomsen: "Functional interaction between Lypd6 and
-------------------	------------------------------------------------------------------------------------------------------------------------------------------------------------------------------

nicotinic acetylcholine receptors." in: **Journal of neurochemistry**, Vol. 138, Issue 6, pp. 806-20, (2016) ([PubMed](#)).



Western Blotting

Image 1. WB Suggested Anti-LYPD6 Antibody Titration:

0.2-1 ug/ml

ELISA Titer: 1:312500

Positive Control: Human Small Intestine