

Datasheet for ABIN2774056
anti-LRRC6 antibody (Middle Region)[Go to Product page](#)[1 Image](#)[1 Publication](#)

Overview

Quantity:	100 µL
Target:	LRRC6
Binding Specificity:	Middle Region
Reactivity:	Human, Mouse, Horse, Rabbit, Dog, Rat, Cow, Pig
Host:	Rabbit
Clonality:	Polyclonal
Conjugate:	This LRRC6 antibody is un-conjugated
Application:	Western Blotting (WB)

Product Details

Immunogen:	The immunogen is a synthetic peptide directed towards the middle region of human LRRC6
Sequence:	MKTTSDRSRE QTNTRSKHME KLEVDPSKHS FPDVTNIVQE KKHTPRRRPE
Predicted Reactivity:	Cow: 79%, Dog: 79%, Horse: 86%, Human: 100%, Mouse: 92%, Pig: 93%, Rabbit: 100%, Rat: 100%
Characteristics:	This is a rabbit polyclonal antibody against LRRC6. It was validated on Western Blot using a cell lysate as a positive control.
Purification:	Affinity Purified

Target Details

Target:	LRRC6
Alternative Name:	LRRC6 (LRRC6 Products)

Target Details

Background: LRRC6 may be involved in spermatocytogenesis or prophase of meiosis.
Alias Symbols: LRTP, TSLRP
Protein Interaction Partner: SCRIB,
Protein Size: 466

Molecular Weight: 54 kDa

Gene ID: 23639

NCBI Accession: [NM_012472](#), [NP_036604](#)

UniProt: [Q86X45](#)

Pathways: [M Phase](#)

Application Details

Application Notes: Optimal working dilutions should be determined experimentally by the investigator.

Comment: Antigen size: 466 AA

Restrictions: For Research Use only

Handling

Format: Liquid

Concentration: Lot specific

Buffer: Liquid. Purified antibody supplied in 1x PBS buffer with 0.09 % (w/v) sodium azide and 2 % sucrose.

Preservative: Sodium azide

Precaution of Use: This product contains Sodium azide: a POISONOUS AND HAZARDOUS SUBSTANCE which should be handled by trained staff only.

Handling Advice: Avoid repeated freeze-thaw cycles.

Storage: -20 °C

Storage Comment: For short term use, store at 2-8°C up to 1 week. For long term storage, store at -20°C in small aliquots to prevent freeze-thaw cycles.

Publications

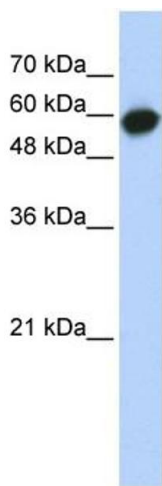
Product cited in: Day, McCarty, Ockerse, Head, Rohn: "Proteolytic Cleavage of Apolipoprotein E in the Down

Syndrome Brain." in: **Aging and disease**, Vol. 7, Issue 3, pp. 267-77, (2016) ([PubMed](#)).

Rohn, Day, Sheffield, Rajic, Poon: "Apolipoprotein E pathology in vascular dementia." in: **International journal of clinical and experimental pathology**, Vol. 7, Issue 3, pp. 938-47, (2014) ([PubMed](#)).

Rohn, Catlin, Coonse, Habig: "Identification of an amino-terminal fragment of apolipoprotein E4 that localizes to neurofibrillary tangles of the Alzheimer's disease brain." in: **Brain research**, Vol. 1475, pp. 106-15, (2012) ([PubMed](#)).

Images



Western Blotting

Image 1. WB Suggested Anti-LRRC6 Antibody Titration:

0.2-1 ug/ml

ELISA Titer: 1:1562500

Positive Control: Transfected 293T