

Datasheet for ABIN2774057
anti-FEM1B antibody (C-Term)

2 Images

[Go to Product page](#)

Overview

Quantity:	100 µL
Target:	FEM1B
Binding Specificity:	C-Term
Reactivity:	Human, Rat, Mouse, Guinea Pig, Horse, Cow, Dog, Rabbit
Host:	Rabbit
Clonality:	Polyclonal
Conjugate:	This FEM1B antibody is un-conjugated
Application:	Western Blotting (WB)

Product Details

Immunogen:	The immunogen is a synthetic peptide directed towards the C terminal region of human FEM1B
Sequence:	DKSTTGVS E I LLKTQMKMSL KCLAARAVRA NDINYQDQIP RTLEEFVGFH
Predicted Reactivity:	Cow: 100%, Dog: 100%, Guinea Pig: 100%, Horse: 100%, Human: 100%, Mouse: 100%, Rabbit: 100%, Rat: 100%
Characteristics:	This is a rabbit polyclonal antibody against FEM1B. It was validated on Western Blot using a cell lysate as a positive control.
Purification:	Affinity Purified

Target Details

Target:	FEM1B
---------	-------

Target Details

Alternative Name:	FEM1B (FEM1B Products)
Background:	<p>FEM1B is a component of an E3 ubiquitin-protein ligase complex, in which it may act as a substrate recognition subunit. It involved in apoptosis by acting as a death receptor-associated protein that mediates apoptosis. FEM1B also involved in glucose homeostasis in pancreatic islet.</p> <p>Alias Symbols: DKFZp451E0710, FIAA, F1A-ALPHA</p> <p>Protein Interaction Partner: GLI1, HIF1AN, NKX3-1, fem-2, Ppm1f, UBC, RBX1, CUL2, TCEB2, TCEB1, Tnfrsf1a, Fem1b, Fas, Casp3, COPS4, RAD9A, CHEK1, DCUN1D1, COPS5, COPS6, CUL5, NEDD8, KIAA0319, GNB2L1, APAF1,</p> <p>Protein Size: 627</p>
Molecular Weight:	69 kDa
Gene ID:	10116
NCBI Accession:	NM_015322 , NP_056137
UniProt:	Q9UK73

Application Details

Application Notes:	Optimal working dilutions should be determined experimentally by the investigator.
Comment:	Antigen size: 627 AA
Restrictions:	For Research Use only

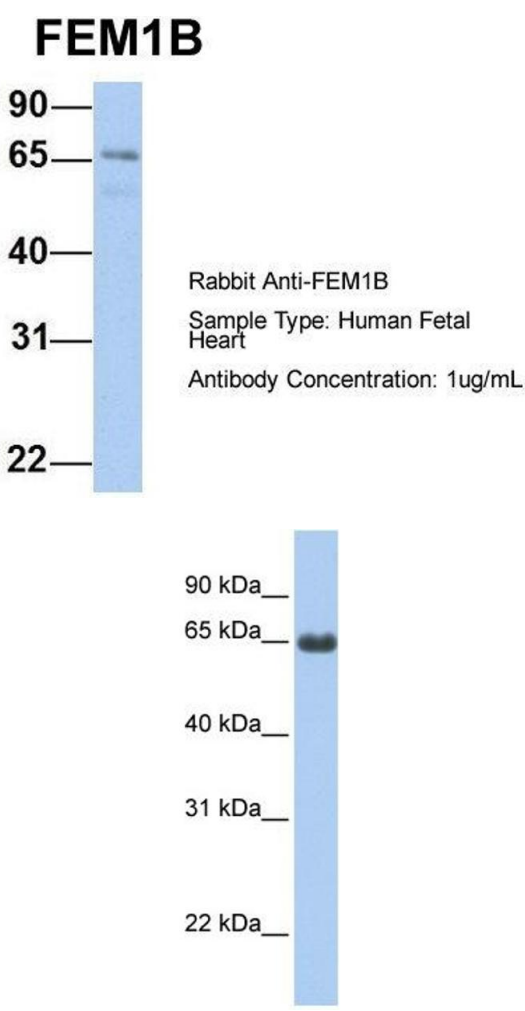
Handling

Format:	Liquid
Concentration:	Lot specific
Buffer:	Liquid. Purified antibody supplied in 1x PBS buffer with 0.09 % (w/v) sodium azide and 2 % sucrose.
Preservative:	Sodium azide
Precaution of Use:	This product contains Sodium azide: a POISONOUS AND HAZARDOUS SUBSTANCE which should be handled by trained staff only.
Handling Advice:	Avoid repeated freeze-thaw cycles.
Storage:	-20 °C

Handling

Storage Comment: For short term use, store at 2-8°C up to 1 week. For long term storage, store at -20°C in small aliquots to prevent freeze-thaw cycles.

Images



Western Blotting

Image 1. Host: Rabbit
Target Name: FEM1B
Sample Tissue: Human Fetal Heart
Antibody Dilution: 1.0 µg/mL

Western Blotting

Image 2. WB Suggested Anti-FEM1B Antibody Titration:
0.2-1 ug/ml
Positive Control: Human Lung