

Datasheet for ABIN2774065

anti-ATG12 antibody (Middle Region)[Go to Product page](#)**2** Images

Overview

Quantity:	100 µL
Target:	ATG12
Binding Specificity:	Middle Region
Reactivity:	Human, Mouse, Rat, Cow, Dog, Guinea Pig, Horse, Zebrafish (Danio rerio)
Host:	Rabbit
Clonality:	Polyclonal
Conjugate:	This ATG12 antibody is un-conjugated
Application:	Western Blotting (WB), Immunohistochemistry (IHC)

Product Details

Immunogen:	The immunogen is a synthetic peptide directed towards the middle region of human ATG12
Sequence:	KFLKLVASEQ LFIYVNSQFA PSPDQEVGTL YECFGSDGKL VLHYCKSQAW
Predicted Reactivity:	Cow: 100%, Dog: 100%, Guinea Pig: 100%, Horse: 100%, Human: 100%, Mouse: 100%, Rat: 100%, Zebrafish: 100%
Characteristics:	This is a rabbit polyclonal antibody against ATG12. It was validated on Western Blot.
Purification:	Affinity Purified

Target Details

Target:	ATG12
Alternative Name:	ATG12 (ATG12 Products)

Target Details

Background:	<p>Autophagy is a process of bulk protein degradation in which cytoplasmic components, including organelles, are enclosed in double-membrane structures called autophagosomes and delivered to lysosomes or vacuoles for degradation. ATG12 is the human homolog of a yeast protein involved in autophagy (Mizushima et al., 1998 [PubMed 9852036]).</p> <p>Alias Symbols: APG12, APG12L, FBR93, HAPG12</p> <p>Protein Interaction Partner: CRX, WIPI2, FADD, EXOC4, Atg10, ATG3, ATG5, CAV1, ATG16L1, WDFY3, APP, BCL2, MCL1, TECPR1, UBC, ATG7, ATG4B, GABARAP, MAP1B, KRTAP4-12, PLSCR1, MDFI, PTK2, DHX36, OTUD4, SF3B1, SF3A1, AUP1,</p> <p>Protein Size: 187</p>
Molecular Weight:	21 kDa
Gene ID:	9140
NCBI Accession:	NM_004707 , NP_004698
UniProt:	O94817
Pathways:	Autophagy

Application Details

Application Notes:	Optimal working dilutions should be determined experimentally by the investigator.
Comment:	Antigen size: 187 AA
Restrictions:	For Research Use only

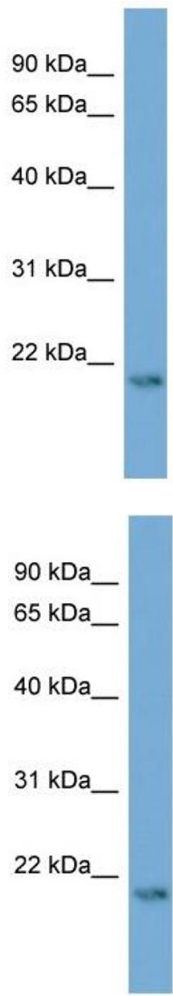
Handling

Format:	Liquid
Concentration:	Lot specific
Buffer:	Liquid. Purified antibody supplied in 1x PBS buffer with 0.09 % (w/v) sodium azide and 2 % sucrose.
Preservative:	Sodium azide
Precaution of Use:	This product contains Sodium azide: a POISONOUS AND HAZARDOUS SUBSTANCE which should be handled by trained staff only.
Handling Advice:	Avoid repeated freeze-thaw cycles.
Storage:	-20 °C

Handling

Storage Comment: For short term use, store at 2-8°C up to 1 week. For long term storage, store at -20°C in small aliquots to prevent freeze-thaw cycles.

Images



Western Blotting

Image 1. WB Suggested Anti-ATG12 Antibody Titration:

0.2-1 ug/ml

ELISA Titer: 1:1562500

Positive Control: 721_B cell lysate

Western Blotting

Image 2. WB Suggested Anti-ATG12

Antibody Titration: 0.2-1 µg/mL ELISA Titer: 1:1562500

Positive Control: 21_B cell lysate

ATG12 is strongly supported by BioGPS gene expression data to be expressed in Human 721_B cells