

Datasheet for ABIN2774078
anti-GCLC antibody (N-Term)[Go to Product page](#)

5 Images

1 Publication

Overview

Quantity:	100 µL
Target:	GCLC
Binding Specificity:	N-Term
Reactivity:	Human, Mouse, Rat, Cow, Zebrafish (Danio rerio), Rabbit, Dog, Guinea Pig, Horse
Host:	Rabbit
Clonality:	Polyclonal
Conjugate:	This GCLC antibody is un-conjugated
Application:	Western Blotting (WB), Immunohistochemistry (IHC)

Product Details

Immunogen:	The immunogen is a synthetic peptide directed towards the N terminal region of human GCLC
Sequence:	VLETLQEKGE RTNPNHPTLW RPEYGSYMIE GTPGQPYGGT MSEFNTVEAN
Predicted Reactivity:	Cow: 100%, Dog: 100%, Guinea Pig: 100%, Horse: 93%, Human: 100%, Mouse: 100%, Rabbit: 100%, Rat: 100%, Zebrafish: 79%
Characteristics:	This is a rabbit polyclonal antibody against GCLC. It was validated on Western Blot using a cell lysate as a positive control.
Purification:	Affinity Purified

Target Details

Target:	GCLC
---------	------

Target Details

Alternative Name:	GCLC (GCLC Products)
Background:	<p>Glutamate-cysteine ligase, also known as gamma-glutamylcysteine synthetase is the first rate limiting enzyme of glutathione synthesis. The enzyme consists of two subunits, a heavy catalytic subunit and a light regulatory subunit. GCLC is the catalytic subunit of 637 amino acids with a calculated molecular weight of 72.773 kDa. Deficiency of gamma-glutamylcysteine synthetase in human is associated with enzymopathic hemolytic anemia. Glutamate-cysteine ligase, also known as gamma-glutamylcysteine synthetase is the first rate limiting enzyme of glutathione synthesis. The enzyme consists of two subunits, a heavy catalytic subunit and a light regulatory subunit. The gene encoding the catalytic subunit encodes a protein of 367 amino acids with a calculated molecular weight of 72.773 kDa and maps to chromosome 6. The regulatory subunit is derived from a different gene located on chromosome 1p22-p21. Deficiency of gamma-glutamylcysteine synthetase in human is associated with enzymopathic hemolytic anemia. Publication Note: This RefSeq record includes a subset of the publications that are available for this gene. Please see the Entrez Gene record to access additional publications.</p> <p>Alias Symbols: GCS, GLCL, GLCLC, GCL</p> <p>Protein Interaction Partner: UBC, PPID, GCLM, CCL22, PAXIP1, ELAVL1,</p> <p>Protein Size: 637</p>
Molecular Weight:	73 kDa
Gene ID:	2729
NCBI Accession:	NM_001498 , NP_001489
UniProt:	P48506
Pathways:	Cell RedoxHomeostasis

Application Details

Application Notes:	Optimal working dilutions should be determined experimentally by the investigator.
Comment:	Antigen size: 637 AA
Restrictions:	For Research Use only

Handling

Format:	Liquid
Concentration:	Lot specific

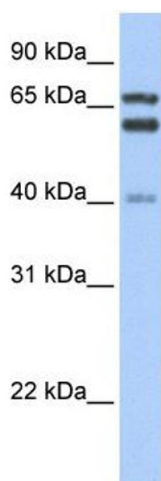
Handling

Buffer:	Liquid. Purified antibody supplied in 1x PBS buffer with 0.09 % (w/v) sodium azide and 2 % sucrose.
Preservative:	Sodium azide
Precaution of Use:	This product contains Sodium azide: a POISONOUS AND HAZARDOUS SUBSTANCE which should be handled by trained staff only.
Handling Advice:	Avoid repeated freeze-thaw cycles.
Storage:	-20 °C
Storage Comment:	For short term use, store at 2-8°C up to 1 week. For long term storage, store at -20°C in small aliquots to prevent freeze-thaw cycles.

Publications

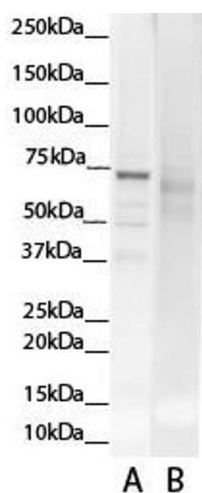
Product cited in:	Swartz, Bor, Misawa, Rekosh, Hammarskjold: "The shuttling SR protein 9G8 plays a role in translation of unspliced mRNA containing a constitutive transport element." in: The Journal of biological chemistry , Vol. 282, Issue 27, pp. 19844-53, (2007) (PubMed).
-------------------	--

Images



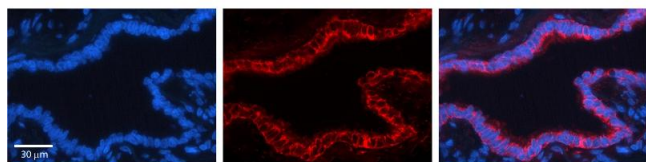
Western Blotting

Image 1. WB Suggested Anti-GCLC Antibody Titration: 0.2-1 ug/ml Positive Control: Human Liver



Western Blotting

Image 2. WB Suggested Anti-GCLC Antibody Titration: 0.2-1 ug/ml. A: - blocking peptide. B: + blocking peptide.



Immunohistochemistry

Image 3. GCLC antibody - N-terminal region (ARP54576_P050) Catalog Number: ARP54576_P050
Formalin Fixed Paraffin Embedded Tissue: Human Bronchial Epithelial Tissue Observed Staining: Cytoplasm and membrane of bronchial epithelial tissue Primary Antibody Concentration: 1:600 Secondary Antibody: Donkey anti-Rabbit-Cy3 Secondary Antibody Concentration: 1:200 Magnification: 20X Exposure Time: 0.5 - 2.0 sec

Please check the [product details page](#) for more images. Overall 5 images are available for ABIN2774078.