

Datasheet for ABIN2774082
anti-AMY1A antibody (Middle Region)



[Go to Product page](#)

2 Images

Overview

| | |
|----------------------|--------------------------------------|
| Quantity: | 100 µL |
| Target: | AMY1A |
| Binding Specificity: | Middle Region |
| Reactivity: | Human, Mouse, Rat, Pig, Dog, Rabbit |
| Host: | Rabbit |
| Clonality: | Polyclonal |
| Conjugate: | This AMY1A antibody is un-conjugated |
| Application: | Western Blotting (WB) |

Product Details

| | |
|-----------------------|---|
| Immunogen: | The immunogen is a synthetic peptide directed towards the middle region of Rat Amy1a |
| Sequence: | YLKNWGEGWG FMPSDRALVF VDNHDNQRGH GAGGSSILTF WDARLYKMAV |
| Predicted Reactivity: | Dog: 100%, Human: 100%, Mouse: 100%, Pig: 100%, Rabbit: 100%, Rat: 100% |
| Characteristics: | This is a rabbit polyclonal antibody against Amy1a. It was validated on Western Blot. |
| Purification: | Affinity Purified |

Target Details

| | |
|-------------------|---|
| Target: | AMY1A |
| Alternative Name: | Amy1a (AMY1A Products) |
| Background: | The function of this protein remains unknown. |

Target Details

Alias Symbols: Amy1

Protein Size: 521

Molecular Weight: 57 kDa

Gene ID: 24203

NCBI Accession: [NM_001010970](#), [NP_001010970](#)

UniProt: [Q99N59](#)

Application Details

Application Notes: Optimal working dilutions should be determined experimentally by the investigator.

Comment: Antigen size: 521 AA

Restrictions: For Research Use only

Handling

Format: Liquid

Concentration: Lot specific

Buffer: Liquid. Purified antibody supplied in 1x PBS buffer with 0.09 % (w/v) sodium azide and 2 % sucrose.

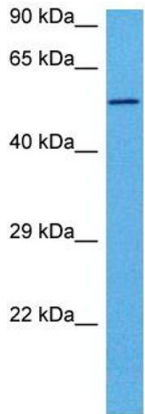
Preservative: Sodium azide

Precaution of Use: This product contains Sodium azide: a POISONOUS AND HAZARDOUS SUBSTANCE which should be handled by trained staff only.

Handling Advice: Avoid repeated freeze-thaw cycles.

Storage: -20 °C

Storage Comment: For short term use, store at 2-8°C up to 1 week. For long term storage, store at -20°C in small aliquots to prevent freeze-thaw cycles.



Host: Rabbit
Target Name: Amy1
Sample Type: Mouse Skeletal Muscle Lysate
Antibody Dilution: 1.0µg/ml

Western Blotting

Image 1. Host: Rabbit Target Name: AMY1 Sample Tissue: Mouse Skeletal Muscle Antibody Dilution: 1ug/ml



Western Blotting

Image 2. Host: Rabbit Target Name: Amy1a Sample Type: Rat Heart lysates Antibody Dilution: 1.0ug/ml