

Datasheet for ABIN2774090
anti-Pallidin antibody (Middle Region)[Go to Product page](#)

1 Image

Overview

Quantity:	100 µL
Target:	Pallidin (PLDN)
Binding Specificity:	Middle Region
Reactivity:	Human, Mouse, Rat, Cow, Dog, Rabbit, Horse, Goat, Guinea Pig
Host:	Rabbit
Clonality:	Polyclonal
Conjugate:	This Pallidin antibody is un-conjugated
Application:	Western Blotting (WB)

Product Details

Immunogen:	The immunogen is a synthetic peptide directed towards the middle region of human PLDN
Sequence:	EGLIEDLTIE DKAVEQLAEG LLSHYLPDLQ RSKQALQELT QNQVLLDTL
Predicted Reactivity:	Cow: 100%, Dog: 100%, Goat: 100%, Guinea Pig: 100%, Horse: 100%, Human: 100%, Mouse: 100%, Rabbit: 100%, Rat: 100%
Characteristics:	This is a rabbit polyclonal antibody against PLDN. It was validated on Western Blot using a cell lysate as a positive control.
Purification:	Affinity Purified

Target Details

Target:	Pallidin (PLDN)
---------	-----------------

Target Details

Alternative Name:	PLDN (PLDN Products)
Background:	<p>PLDN may play a role in intracellular vesicle trafficking. It interacts with Syntaxin 13 which mediates intracellular membrane fusion. The protein encoded by this gene may play a role in intracellular vesicle trafficking. It interacts with Syntaxin 13 which mediates intracellular membrane fusion. Several alternatively spliced transcript variants of this gene have been described, but the full-length nature of some of these variants has not been determined.</p> <p>Publication Note: This RefSeq record includes a subset of the publications that are available for this gene. Please see the Entrez Gene record to access additional publications.</p> <p>Alias Symbols: PA, PALLID, HPS9, PLDN</p> <p>Protein Interaction Partner: SYCE3, SKA1, HAUS1, CORO6, CCDC136, CCHCR1, RABGEF1, BLOC1S6, NUP62, DCTN2, ABI2, MED21, CDK5R1, STX11, TPM3, SMN2, KRT13, NDN, OLFM2, IFT20, CCDC22, APP, ELAVL1, PLEKHA5, LURAP1, PLEKHF2, CCDC53, BLOC1S2, BLOC1S4, EXOC8, WDYHV1, AGGF1, NDC80, DTNBP1, SNA</p> <p>Protein Size: 172</p>
Molecular Weight:	20 kDa
Gene ID:	26258
NCBI Accession:	NM_012388 , NP_036520
UniProt:	Q9UL45
Pathways:	Synaptic Vesicle Exocytosis

Application Details

Application Notes:	Optimal working dilutions should be determined experimentally by the investigator.
Comment:	Antigen size: 172 AA
Restrictions:	For Research Use only

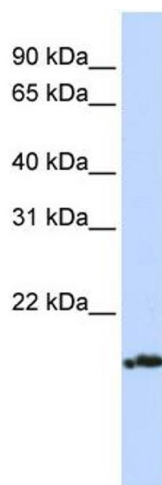
Handling

Format:	Liquid
Concentration:	Lot specific
Buffer:	Liquid. Purified antibody supplied in 1x PBS buffer with 0.09 % (w/v) sodium azide and 2 % sucrose.
Preservative:	Sodium azide

Handling

Precaution of Use:	This product contains Sodium azide: a POISONOUS AND HAZARDOUS SUBSTANCE which should be handled by trained staff only.
Handling Advice:	Avoid repeated freeze-thaw cycles.
Storage:	-20 °C
Storage Comment:	For short term use, store at 2-8°C up to 1 week. For long term storage, store at -20°C in small aliquots to prevent freeze-thaw cycles.

Images



Western Blotting

Image 1. WB Suggested Anti-PLDN Antibody Titration: 0.2-1 ug/ml ELISA Titer: 1:12500 Positive Control: Jurkat cell lysate