



[Go to Product page](#)

Datasheet for ABIN2774092
anti-PKN1 antibody (C-Term)

1 Image

Overview

Quantity:	100 µL
Target:	PKN1
Binding Specificity:	C-Term
Reactivity:	Human, Mouse, Rat, Cow, Dog, Horse, Guinea Pig
Host:	Rabbit
Clonality:	Polyclonal
Conjugate:	This PKN1 antibody is un-conjugated
Application:	Western Blotting (WB)

Product Details

Immunogen:	The immunogen is a synthetic peptide directed towards the C-terminal region of RAT Pkn1
Sequence:	VPTLSGRTDV SNFDEEFTGE APTLSPPRDA RPLTAAEQAA FRDFDFVAGG
Predicted Reactivity:	Cow: 100%, Dog: 100%, Guinea Pig: 93%, Horse: 100%, Human: 100%, Mouse: 100%, Rat: 100%
Characteristics:	This is a rabbit polyclonal antibody against Pkn1. It was validated on Western Blot.
Purification:	Affinity Purified

Target Details

Target:	PKN1
Alternative Name:	Pkn1 (PKN1 Products)
Background:	Pkn1 displays phosphorylation dependent protein kinase activity.

Target Details

Alias Symbols: PAK-1, Prkcl1
Protein Interaction Partner: Zfand6,
Protein Size: 946

Molecular Weight: 104 kDa

Gene ID: 29355

NCBI Accession: [NM_017175](#), [NP_058871](#)

UniProt: [Q63433](#)

Application Details

Application Notes: Optimal working dilution should be determined by the investigator.

Restrictions: For Research Use only

Handling

Format: Liquid

Concentration: 1 mg/mL

Buffer: Liquid. Purified antibody supplied in 1x PBS buffer with 0.09 % (w/v) sodium azide and 2 % sucrose.

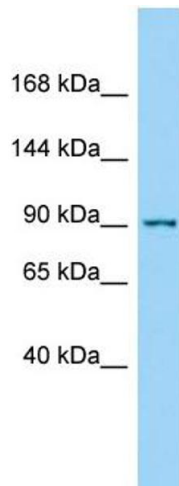
Preservative: Sodium azide

Precaution of Use: This product contains Sodium azide: a POISONOUS AND HAZARDOUS SUBSTANCE which should be handled by trained staff only.

Handling Advice: Avoid repeat freeze-thaw cycles.

Storage: -20 °C

Storage Comment: For short term use, store at 2-8°C up to 1 week. For long term storage, store at -20°C in small aliquots to prevent freeze-thaw cycles.



Western Blotting

Image 1.