

Datasheet for ABIN2774094
anti-GRP antibody (Middle Region)



[Go to Product page](#)

1 Image

Overview

Quantity:	100 µL
Target:	GRP
Binding Specificity:	Middle Region
Reactivity:	Human, Mouse, Rat, Cow, Dog, Horse, Pig, Rabbit, Guinea Pig
Host:	Rabbit
Clonality:	Polyclonal
Conjugate:	This GRP antibody is un-conjugated
Application:	Western Blotting (WB)

Product Details

Sequence:	CGDSEDPPAD VAIELKAVFT DRQLLRNSCI SGERGEEQSA IPYFPFIPDQ
Cross-Reactivity (Details):	1110067D22Rik does not bind lactose, and may not bind carbohydrates.
Predicted Reactivity:	Cow: 100%, Dog: 100%, Guinea Pig: 93%, Horse: 100%, Human: 100%, Mouse: 100%, Pig: 100%, Rabbit: 100%, Rat: 100%
Characteristics:	This is a rabbit polyclonal antibody against 1110067D22Rik. It was validated on Western Blot.
Purification:	Affinity Purified

Target Details

Target:	GRP
Alternative Name:	1110067D22Rik (GRP Products)

Target Details

Background:	1110067D22Rik does not bind lactose, and may not bind carbohydrates. Alias Symbols: Grpa, Hspc159, Lgalsla, A530071M23, RP23-455B19.1, 1110067D22Rik Protein Size: 172
Molecular Weight:	19 kDa
Gene ID:	216551
NCBI Accession:	NM_173752 , NP_776113
UniProt:	Q8VED9

Application Details

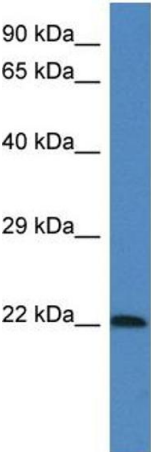
Application Notes:	Optimal working dilutions should be determined experimentally by the investigator.
Comment:	Antigen size: 172 AA
Restrictions:	For Research Use only

Handling

Format:	Liquid
Concentration:	Lot specific
Buffer:	Liquid. Purified antibody supplied in 1x PBS buffer with 0.09 % (w/v) sodium azide and 2 % sucrose.
Preservative:	Sodium azide
Precaution of Use:	This product contains Sodium azide: a POISONOUS AND HAZARDOUS SUBSTANCE which should be handled by trained staff only.
Handling Advice:	Avoid repeated freeze-thaw cycles.
Storage:	-20 °C
Storage Comment:	For short term use, store at 2-8°C up to 1 week. For long term storage, store at -20°C in small aliquots to prevent freeze-thaw cycles.

Western Blotting

Image 1.



Rabbit Anti-1110067D22Rik Antibody
Catalog Number: ARP54991
Lot Number: QC23810
Lane: Mouse Brain Lysate

Antibody Titration: 1.0µg/ml
Gel Concentration: 12%