



[Go to Product page](#)

Datasheet for ABIN2774119
anti-FRMD3 antibody (C-Term)

1 Image

Overview

Quantity:	100 µL
Target:	FRMD3
Binding Specificity:	C-Term
Reactivity:	Human, Cow, Horse, Mouse, Rabbit, Dog, Guinea Pig, Rat
Host:	Rabbit
Clonality:	Polyclonal
Conjugate:	This FRMD3 antibody is un-conjugated
Application:	Western Blotting (WB)

Product Details

Immunogen:	The immunogen is a synthetic peptide directed towards the C-terminal region of Human FRMD3
Sequence:	DDDEIDMLFD CPSRLELERE DTDSFEDLEA DENAFLIAEE EELKEARRAL
Predicted Reactivity:	Cow: 100%, Dog: 100%, Guinea Pig: 100%, Horse: 100%, Human: 100%, Mouse: 100%, Rabbit: 100%, Rat: 100%
Characteristics:	This is a rabbit polyclonal antibody against FRMD3. It was validated on Western Blot.
Purification:	Affinity Purified

Target Details

Target:	FRMD3
---------	-------

Target Details

Alternative Name: FRMD3 ([FRMD3 Products](#))

Background: The protein encoded by this gene is a single pass membrane protein primarily found in ovaries. A similar protein in erythrocytes helps determine the shape of red blood cells, but the function of the encoded protein has not been determined. There is some evidence that this is a tumor suppressor gene, and there is also evidence linking defects in this gene to susceptibility to diabetic nephropathy in type 1 diabetes. Several transcript variants encoding different isoforms have been found for this gene.

Protein Size: 362

Molecular Weight: 39 kDa

Gene ID: 257019

Application Details

Restrictions: For Research Use only

Handling

Format: Liquid

Concentration: 1 mg/mL

Buffer: Liquid. Purified antibody supplied in 1x PBS buffer with 0.09 % (w/v) sodium azide and 2 % sucrose.

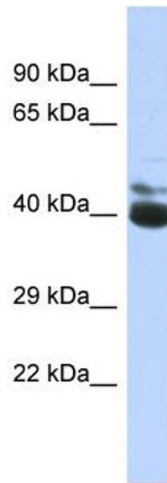
Preservative: Sodium azide

Precaution of Use: This product contains Sodium azide: a POISONOUS AND HAZARDOUS SUBSTANCE which should be handled by trained staff only.

Handling Advice: Avoid repeat freeze-thaw cycles.

Storage: -20 °C

Storage Comment: For short term use, store at 2-8°C up to 1 week. For long term storage, store at -20°C in small aliquots to prevent freeze-thaw cycles.



Western Blotting

Image 1.