

Datasheet for ABIN2774124
anti-RD3 antibody (N-Term)[Go to Product page](#)

1 Image

Overview

Quantity:	100 µL
Target:	RD3
Binding Specificity:	N-Term
Reactivity:	Human, Dog
Host:	Rabbit
Clonality:	Polyclonal
Conjugate:	This RD3 antibody is un-conjugated
Application:	Western Blotting (WB)

Product Details

Immunogen:	The immunogen is a synthetic peptide directed towards the N terminal region of human RD3
Sequence:	GQMREAERQQ RERSNAVRKV CTGVDYSWLA STPRSTYDLS PIERLQLEDV
Predicted Reactivity:	Dog: 79%, Human: 100%
Characteristics:	This is a rabbit polyclonal antibody against RD3. It was validated on Western Blot using a cell lysate as a positive control.
Purification:	Affinity Purified

Target Details

Target:	RD3
Alternative Name:	RD3 (RD3 Products)

Target Details

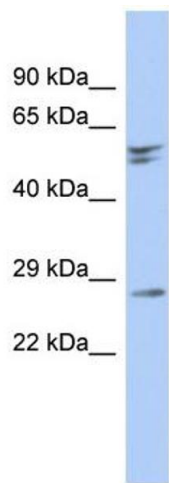
Background:	RD3 is preferentially expressed in retina. Defects in RD3 are the cause of Leber congenital amaurosis type 12 (LCA12). Alias Symbols: C1orf36, LCA12 Protein Interaction Partner: EHMT2, EIF2B1, APP, Protein Size: 195
Molecular Weight:	23 kDa
Gene ID:	343035
NCBI Accession:	NM_183059 , NP_898882
UniProt:	Q7Z3Z2

Application Details

Application Notes:	Optimal working dilutions should be determined experimentally by the investigator.
Comment:	Antigen size: 195 AA
Restrictions:	For Research Use only

Handling

Format:	Liquid
Concentration:	Lot specific
Buffer:	Liquid. Purified antibody supplied in 1x PBS buffer with 0.09 % (w/v) sodium azide and 2 % sucrose.
Preservative:	Sodium azide
Precaution of Use:	This product contains Sodium azide: a POISONOUS AND HAZARDOUS SUBSTANCE which should be handled by trained staff only.
Handling Advice:	Avoid repeated freeze-thaw cycles.
Storage:	-20 °C
Storage Comment:	For short term use, store at 2-8°C up to 1 week. For long term storage, store at -20°C in small aliquots to prevent freeze-thaw cycles.



Western Blotting

Image 1. WB Suggested Anti-RD3 Antibody Titration: 0.2-1 ug/ml

ELISA Titer: 1:1562500

Positive Control: Human brain