

Datasheet for ABIN2774128
anti-PPAPDC2 antibody (N-Term)[Go to Product page](#)

1 Image

Overview

Quantity:	100 µL
Target:	PPAPDC2
Binding Specificity:	N-Term
Reactivity:	Human, Mouse, Rat, Dog, Cow, Pig, Rabbit
Host:	Rabbit
Clonality:	Polyclonal
Conjugate:	This PPAPDC2 antibody is un-conjugated
Application:	Western Blotting (WB)

Product Details

Immunogen:	The immunogen is a synthetic peptide directed towards the N terminal region of human PPAPDC2
Sequence:	MPSPRRSMEG RPLGVSASSS SSSPGSPAHG GGGGGSRFEF QSLSSRATA
Predicted Reactivity:	Cow: 100%, Dog: 86%, Human: 100%, Mouse: 79%, Pig: 81%, Rabbit: 93%, Rat: 87%
Characteristics:	This is a rabbit polyclonal antibody against PPAPDC2. It was validated on Western Blot using a cell lysate as a positive control.
Purification:	Affinity Purified

Target Details

Target:	PPAPDC2
---------	---------

Target Details

Alternative Name:	PPAPDC2 (PPAPDC2 Products)
Background:	<p>PPAPDC2 is the phosphatase that dephosphorylates presqualene diphosphate (PSDP) into presqualene monophosphate (PSMP), suggesting that it may be indirectly involved in innate immunity. PSDP is a bioactive lipid that rapidly remodels to presqualene monophosphate PSMP upon cell activation. PPAPDC2 displays diphosphate phosphatase activity with a substrate preference for PSDP > FDP > phosphatidic acid.</p> <p>Alias Symbols: FLJ46512, FLJ90191, MGC15483, PSDP, bA6J24.6, PDP1</p> <p>Protein Interaction Partner: UBC,</p> <p>Protein Size: 295</p>
Molecular Weight:	32 kDa
Gene ID:	403313
NCBI Accession:	NM_203453 , NP_982278
UniProt:	Q8IY26

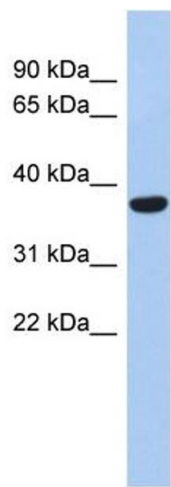
Application Details

Application Notes:	Optimal working dilutions should be determined experimentally by the investigator.
Comment:	Antigen size: 295 AA
Restrictions:	For Research Use only

Handling

Format:	Liquid
Concentration:	Lot specific
Buffer:	Liquid. Purified antibody supplied in 1x PBS buffer with 0.09 % (w/v) sodium azide and 2 % sucrose.
Preservative:	Sodium azide
Precaution of Use:	This product contains Sodium azide: a POISONOUS AND HAZARDOUS SUBSTANCE which should be handled by trained staff only.
Handling Advice:	Avoid repeated freeze-thaw cycles.
Storage:	-20 °C
Storage Comment:	For short term use, store at 2-8°C up to 1 week. For long term storage, store at -20°C in small

aliquots to prevent freeze-thaw cycles.



Western Blotting				
Image	1.	WB	Suggested	Anti-PPAPDC2 Antibody
Titration: 0.2-1 ug/ml				
ELISA Titer: 1:62500				
Positive Control: Human heart				