



[Go to Product page](#)

Datasheet for ABIN2774131

anti-PROS1 antibody (Middle Region)

2 Images

1 Publication

Overview

Quantity:	100 µL
Target:	PROS1 (PROS)
Binding Specificity:	Middle Region
Reactivity:	Human, Rat, Mouse, Dog, Horse, Rabbit, Cow, Guinea Pig
Host:	Rabbit
Clonality:	Polyclonal
Conjugate:	This PROS1 antibody is un-conjugated
Application:	Western Blotting (WB), Immunohistochemistry (IHC)

Product Details

Immunogen:	The immunogen is a synthetic peptide directed towards the middle region of human PROS1
Sequence:	MCAQLCVNYP GGYTCYCDGK KGFKLAQDQK SCEVSVCLP LNLDTKYELL
Predicted Reactivity:	Cow: 100%, Dog: 86%, Guinea Pig: 93%, Horse: 100%, Human: 100%, Mouse: 100%, Rabbit: 93%, Rat: 93%
Characteristics:	This is a rabbit polyclonal antibody against PROS1. It was validated on Western Blot using a cell lysate as a positive control.
Purification:	Affinity Purified

Target Details

Target:	PROS1 (PROS)
---------	--------------

Target Details

Alternative Name:	PROS1 (PROS Products)
Background:	<p>PROS1 is an anticoagulant plasma protein, it is a cofactor to activated protein C in the degradation of coagulation factors Va and VIIIa. It helps to prevent coagulation and stimulating fibrinolysis.</p> <p>Alias Symbols: PROS, PS 26, PS21, PS22, PS23, PS24, PS25, PSA</p> <p>Protein Interaction Partner: FBXO6, NPM1, TBK1, RPSA, C4BPA, TYRO3, F8, F10, F5, F2, PROC, C4BPB,</p> <p>Protein Size: 676</p>
Molecular Weight:	71 kDa
Gene ID:	5627
NCBI Accession:	NM_000313 , NP_000304
UniProt:	P07225

Application Details

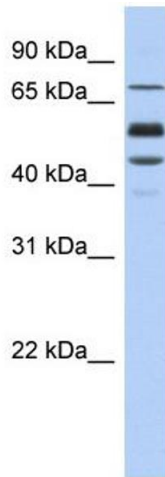
Application Notes:	Optimal working dilutions should be determined experimentally by the investigator.
Comment:	Antigen size: 676 AA
Restrictions:	For Research Use only

Handling

Format:	Liquid
Concentration:	Lot specific
Buffer:	Liquid. Purified antibody supplied in 1x PBS buffer with 0.09 % (w/v) sodium azide and 2 % sucrose.
Preservative:	Sodium azide
Precaution of Use:	This product contains Sodium azide: a POISONOUS AND HAZARDOUS SUBSTANCE which should be handled by trained staff only.
Handling Advice:	Avoid repeated freeze-thaw cycles.
Storage:	-20 °C
Storage Comment:	For short term use, store at 2-8°C up to 1 week. For long term storage, store at -20°C in small aliquots to prevent freeze-thaw cycles.

Product cited in: Ten Kate, Platteel, Mulder, Terpstra, Nicolaes, Reitsma, van der Steege, van der Meer: "PROS1 analysis in 87 pedigrees with hereditary protein S deficiency demonstrates striking genotype-phenotype associations." in: **Human mutation**, Vol. 29, Issue 7, pp. 939-47, (2008) ([PubMed](#)).

Images



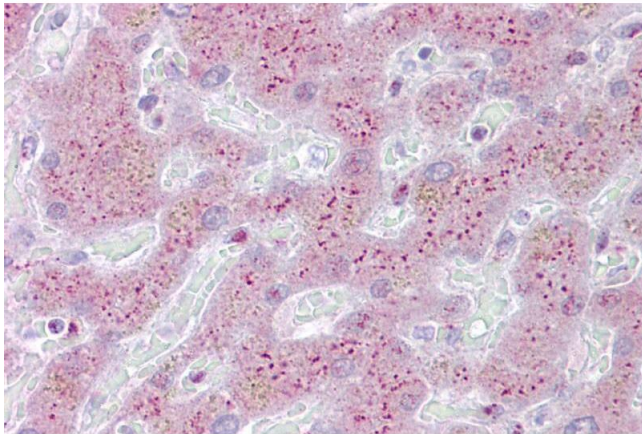
Western Blotting

Image 1. WB Suggested Anti-PROS1 Antibody Titration:

0.2-1 ug/ml

ELISA Titer: 1:312500

Positive Control: Human Muscle



Immunohistochemistry

Image 2. Immunohistochemistry with Liver tissue at an antibody concentration of 5µg/ml using anti-PROS1 antibody (ARP56097_P050)