

Datasheet for ABIN2774133  
**anti-RPS7 antibody (N-Term)**



[Go to Product page](#)

1 Image

## Overview

Quantity:	100 µL
Target:	RPS7
Binding Specificity:	N-Term
Reactivity:	Human, Mouse, Rat, Dog, Rabbit, Pig
Host:	Rabbit
Clonality:	Polyclonal
Conjugate:	This RPS7 antibody is un-conjugated
Application:	Western Blotting (WB)

## Product Details

Immunogen:	The immunogen is a synthetic peptide directed towards the N terminal region of human RPS7
Sequence:	MFSSSAKIVK PNGEKPDEFE SGISQALLEL EMNSDLKAQL RELNITAAKE
Predicted Reactivity:	Dog: 100%, Human: 100%, Mouse: 100%, Pig: 100%, Rabbit: 100%, Rat: 100%
Characteristics:	This is a rabbit polyclonal antibody against RPS7. It was validated on Western Blot using a cell lysate as a positive control.
Purification:	Affinity Purified

## Target Details

Target:	RPS7
Alternative Name:	RPS7 ( <a href="#">RPS7 Products</a> )

## Target Details

Background:	<p>RPS7 is required for rRNA maturation. Ribosomes, the organelles that catalyze protein synthesis, consist of a small 40S subunit and a large 60S subunit. Together these subunits are composed of 4 RNA species and approximately 80 structurally distinct proteins. This gene encodes a ribosomal protein that is a component of the 40S subunit. The protein belongs to the S7E family of ribosomal proteins. It is located in the cytoplasm. As is typical for genes encoding ribosomal proteins, there are multiple processed pseudogenes of this gene dispersed through the genome. Publication Note: This RefSeq record includes a subset of the publications that are available for this gene. Please see the Entrez Gene record to access additional publications.</p> <p>Alias Symbols: S7, DBA8</p> <p>Protein Interaction Partner: RPS3, MDM2, HUWE1, ZBTB14, UBC, TP53, CEP76, TUBGCP3, CEP57, CDC37L1, RPA3, RPA2, RPA1, RNF2, EED, FAU, DDX3X, PSMC4, WIBG, EIF2A, WDR26, PNO1, TSR1, RPS27L, RPS29, RPS28, RPS27, RPS26, RPS25, RPS24, RPS23, RPS20, RPS19, RPS18, RPS16, RPS15A, RPS14, RPS13</p> <p>Protein Size: 194</p>
Molecular Weight:	22 kDa
Gene ID:	6201
NCBI Accession:	<a href="#">NM_001011</a> , <a href="#">NP_001002</a>
UniProt:	<a href="#">P62081</a>
Pathways:	<a href="#">Tube Formation</a>

## Application Details

Application Notes:	Optimal working dilutions should be determined experimentally by the investigator.
Comment:	Antigen size: 194 AA
Restrictions:	For Research Use only

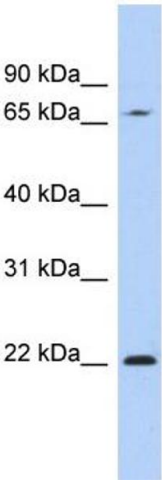
## Handling

Format:	Liquid
Concentration:	Lot specific
Buffer:	Liquid. Purified antibody supplied in 1x PBS buffer with 0.09 % (w/v) sodium azide and 2 % sucrose.
Preservative:	Sodium azide

Handling

Precaution of Use:	This product contains Sodium azide: a POISONOUS AND HAZARDOUS SUBSTANCE which should be handled by trained staff only.
Handling Advice:	Avoid repeated freeze-thaw cycles.
Storage:	-20 °C
Storage Comment:	For short term use, store at 2-8°C up to 1 week. For long term storage, store at -20°C in small aliquots to prevent freeze-thaw cycles.

Images



Western Blotting

**Image 1. WB Suggested Anti-RPS7 Antibody Titration:** 0.2-1 ug/ml

**ELISA Titer:** 1:12500

**Positive Control:** Human Placenta