

Datasheet for ABIN2774138
anti-RGL3 antibody (Middle Region)[Go to Product page](#)

1 Image

Overview

Quantity:	100 µL
Target:	RGL3
Binding Specificity:	Middle Region
Reactivity:	Human, Dog, Horse, Pig, Cow, Guinea Pig, Mouse, Rat
Host:	Rabbit
Clonality:	Polyclonal
Conjugate:	This RGL3 antibody is un-conjugated
Application:	Western Blotting (WB)

Product Details

Immunogen:	The immunogen is a synthetic peptide directed towards the middle region of human RGL3
Sequence:	RNFSSLRAIL SALQSNPIYR LKRSWGAVSR EPLSTFRKLS QIFSDENNHL
Predicted Reactivity:	Cow: 93%, Dog: 100%, Guinea Pig: 93%, Horse: 100%, Human: 100%, Mouse: 93%, Pig: 100%, Rat: 100%
Characteristics:	This is a rabbit polyclonal antibody against RGL3. It was validated on Western Blot.
Purification:	Affinity Purified

Target Details

Target:	RGL3
Alternative Name:	RGL3 (RGL3 Products)

Target Details

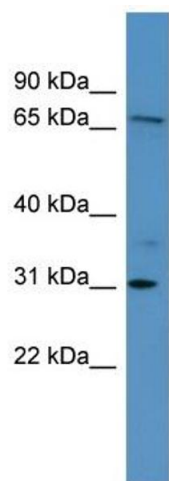
Background:	<p>RGL3 is a guanine nucleotide exchange factor (GEF) for Ral-A. RGL3 is a potential effector of GTPase HRas and Ras-related protein M-Ras. RGL3 negatively regulates Elk-1-dependent gene induction downstream of HRas and MEKK1.</p> <p>Alias Symbols: FLJ00153, FLJ32585, FLJ44275, MGC126805, MGC138163</p> <p>Protein Interaction Partner: UBC,</p> <p>Protein Size: 710</p>
Molecular Weight:	78 kDa
Gene ID:	57139
NCBI Accession:	NM_001035223 , NP_001030300
UniProt:	Q3MIN7

Application Details

Application Notes:	Optimal working dilutions should be determined experimentally by the investigator.
Comment:	Antigen size: 710 AA
Restrictions:	For Research Use only

Handling

Format:	Liquid
Concentration:	Lot specific
Buffer:	Liquid. Purified antibody supplied in 1x PBS buffer with 0.09 % (w/v) sodium azide and 2 % sucrose.
Preservative:	Sodium azide
Precaution of Use:	This product contains Sodium azide: a POISONOUS AND HAZARDOUS SUBSTANCE which should be handled by trained staff only.
Handling Advice:	Avoid repeated freeze-thaw cycles.
Storage:	-20 °C
Storage Comment:	For short term use, store at 2-8°C up to 1 week. For long term storage, store at -20°C in small aliquots to prevent freeze-thaw cycles.



Western Blotting

Image 1. WB Suggested Anti-RGL3 Antibody Titration: 0.2-1 ug/ml ELISA Titer: 1:62500 Positive Control: HepG2 cell lysate