

Datasheet for ABIN2774141  
**anti-MTRF1L antibody (N-Term)**[Go to Product page](#)

## 1 Image

## Overview

Quantity:	100 µL
Target:	MTRF1L
Binding Specificity:	N-Term
Reactivity:	Human, Pig, Guinea Pig, Mouse, Rabbit, Rat, Horse
Host:	Rabbit
Clonality:	Polyclonal
Conjugate:	This MTRF1L antibody is un-conjugated
Application:	Western Blotting (WB)

## Product Details

Immunogen:	The immunogen is a synthetic peptide directed towards the N terminal region of human MTRF1L
Sequence:	ELFTRGGPLR TFLERQAGSE AHLKVRRPEL LAVIKLLNEK ERELRETEHL
Predicted Reactivity:	Guinea Pig: 79%, Horse: 86%, Human: 100%, Mouse: 79%, Pig: 86%, Rabbit: 86%, Rat: 86%
Characteristics:	This is a rabbit polyclonal antibody against MTRF1L. It was validated on Western Blot using a cell lysate as a positive control.
Purification:	Affinity Purified

## Target Details

Target:	MTRF1L
---------	--------

## Target Details

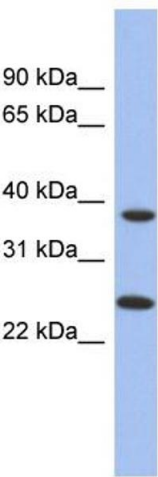
Alternative Name:	MTRF1L ( <a href="#">MTRF1L Products</a> )
Background:	<p>MTRF1L is a mitochondrial peptide chain release factor that directs the termination of translation in response to the peptide chain termination codons UAA and UAG.</p> <p>Alias Symbols: MGC102748, MRF1L, HMRF1L, mtRF1a</p> <p>Protein Interaction Partner: UBC,</p> <p>Protein Size: 271</p>
Molecular Weight:	30 kDa
Gene ID:	54516
NCBI Accession:	<a href="#">NM_001114184</a> , <a href="#">NP_001107656</a>

## Application Details

Application Notes:	Optimal working dilutions should be determined experimentally by the investigator.
Comment:	Antigen size: 271 AA
Restrictions:	For Research Use only

## Handling

Format:	Liquid
Concentration:	Lot specific
Buffer:	Liquid. Purified antibody supplied in 1x PBS buffer with 0.09 % (w/v) sodium azide and 2 % sucrose.
Preservative:	Sodium azide
Precaution of Use:	This product contains Sodium azide: a POISONOUS AND HAZARDOUS SUBSTANCE which should be handled by trained staff only.
Handling Advice:	Avoid repeated freeze-thaw cycles.
Storage:	-20 °C
Storage Comment:	For short term use, store at 2-8°C up to 1 week. For long term storage, store at -20°C in small aliquots to prevent freeze-thaw cycles.



**Western Blotting**

**Image 1. WB Suggested Anti-MTRF1L Antibody Titration:**

0.2-1 ug/ml

**ELISA Titer:** 1:62500

**Positive Control:** Human Liver