

Datasheet for ABIN2774166
anti-TUBE1 antibody (Middle Region)



[Go to Product page](#)

1 Image

Overview

Quantity:	100 µL
Target:	TUBE1
Binding Specificity:	Middle Region
Reactivity:	Human, Mouse, Rat, Guinea Pig, Horse, Dog, Rabbit, Cow, Zebrafish (Danio rerio)
Host:	Rabbit
Clonality:	Polyclonal
Conjugate:	This TUBE1 antibody is un-conjugated
Application:	Western Blotting (WB)

Product Details

Immunogen:	The immunogen is a synthetic peptide directed towards the middle region of human TUBE1
Sequence:	PSGEDDVITS PYNSILAMKE LNEHADCVLP IDNQSLFDII SKIDLMVNSG
Predicted Reactivity:	Cow: 100%, Dog: 100%, Guinea Pig: 100%, Horse: 100%, Human: 100%, Mouse: 93%, Rabbit: 100%, Rat: 93%, Zebrafish: 93%
Characteristics:	This is a rabbit polyclonal antibody against TUBE1. It was validated on Western Blot using a cell lysate as a positive control.
Purification:	Affinity Purified

Target Details

Target:	TUBE1
---------	-------

Target Details

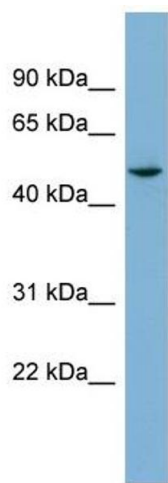
Alternative Name:	TUBE1 (TUBE1 Products)
Background:	<p>This gene encodes a member of the tubulin superfamily. This protein localizes to the centriolar sub-distal appendages that are associated with the older of the two centrioles after centrosome duplication. This protein plays a central role in organization</p> <p>Alias Symbols: FLJ22589, TUBE, dJ142L7.2</p> <p>Protein Interaction Partner: UBC, IGSF8, ICAM1, CD81,</p> <p>Protein Size: 475</p>
Molecular Weight:	53 kDa
Gene ID:	51175
NCBI Accession:	NM_016262 , NP_057346
UniProt:	Q9UJT0
Pathways:	Microtubule Dynamics

Application Details

Application Notes:	Optimal working dilutions should be determined experimentally by the investigator.
Comment:	Antigen size: 475 AA
Restrictions:	For Research Use only

Handling

Format:	Liquid
Concentration:	Lot specific
Buffer:	Liquid. Purified antibody supplied in 1x PBS buffer with 0.09 % (w/v) sodium azide and 2 % sucrose.
Preservative:	Sodium azide
Precaution of Use:	This product contains Sodium azide: a POISONOUS AND HAZARDOUS SUBSTANCE which should be handled by trained staff only.
Handling Advice:	Avoid repeated freeze-thaw cycles.
Storage:	-20 °C
Storage Comment:	For short term use, store at 2-8°C up to 1 week. For long term storage, store at -20°C in small aliquots to prevent freeze-thaw cycles.



Western Blotting

Image 1. WB Suggested Anti-TUBE1 Antibody Titration:

0.2-1 ug/ml

ELISA Titer: 1:1562500

Positive Control: MCF7 cell lysate