



[Go to Product page](#)

Datasheet for ABIN2774179

anti-TBC1D19 antibody (Middle Region)

2 Images

Overview

Quantity:	100 µL
Target:	TBC1D19
Binding Specificity:	Middle Region
Reactivity:	Human, Mouse, Rat, Dog, Guinea Pig, Cow, Horse, Rabbit
Host:	Rabbit
Clonality:	Polyclonal
Conjugate:	This TBC1D19 antibody is un-conjugated
Application:	Western Blotting (WB)

Product Details

Immunogen:	The immunogen is a synthetic peptide directed towards the middle region of human TBC1D19
Sequence:	PVYAPKDFLE VLINLRNPNY ENGDSLFRF HLGLIQVPLK VKDIPELKEC
Predicted Reactivity:	Cow: 93%, Dog: 100%, Guinea Pig: 100%, Horse: 100%, Human: 100%, Mouse: 100%, Rabbit: 93%, Rat: 100%
Characteristics:	This is a rabbit polyclonal antibody against TBC1D19. It was validated on Western Blot.
Purification:	Affinity Purified

Target Details

Target:	TBC1D19
Alternative Name:	TBC1D19 (TBC1D19 Products)

Target Details

Background: TBC1D19 may act as a GTPase-activating protein for Rab family protein(s).
Alias Symbols: FLJ11082
Protein Interaction Partner: MAGEA12, PPP1CC, UBC,
Protein Size: 526

Molecular Weight: 60 kDa

Gene ID: 55296

NCBI Accession: [NM_018317](#), [NP_060787](#)

UniProt: [Q8N5T2](#)

Application Details

Application Notes: Optimal working dilutions should be determined experimentally by the investigator.

Comment: Antigen size: 526 AA

Restrictions: For Research Use only

Handling

Format: Liquid

Concentration: Lot specific

Buffer: Liquid. Purified antibody supplied in 1x PBS buffer with 0.09 % (w/v) sodium azide and 2 % sucrose.

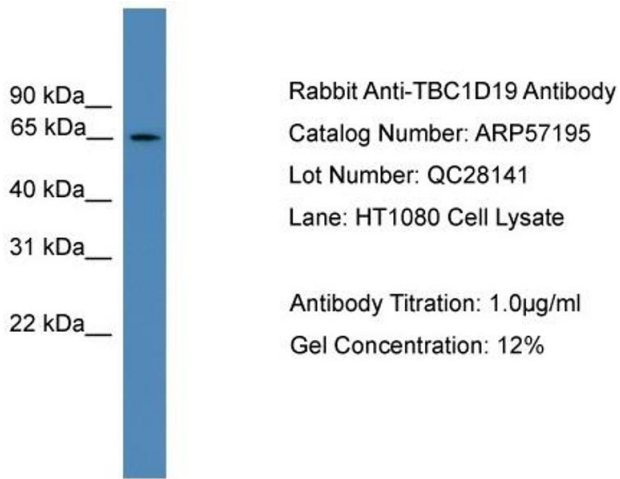
Preservative: Sodium azide

Precaution of Use: This product contains Sodium azide: a POISONOUS AND HAZARDOUS SUBSTANCE which should be handled by trained staff only.

Handling Advice: Avoid repeated freeze-thaw cycles.

Storage: -20 °C

Storage Comment: For short term use, store at 2-8°C up to 1 week. For long term storage, store at -20°C in small aliquots to prevent freeze-thaw cycles.



Western Blotting

Image 1. WB Suggested Anti-TBC1D19

Antibody Titration: 0.2-1 µg/mL ELISA Titer: 1:12500

Positive Control: HT1080 cell lysate



Western Blotting

Image 2. WB Suggested Anti-TBC1D19 Antibody Titration:

0.2-1 ug/ml

ELISA Titer: 1:312500

Positive Control: HT1080 cell lysate