



[Go to Product page](#)

Datasheet for ABIN2774180

anti-UFSP2 antibody (Middle Region)

1 Image

Overview

Quantity:	100 µL
Target:	UFSP2 (C4orf20)
Binding Specificity:	Middle Region
Reactivity:	Human, Mouse, Rat, Cow, Horse, Rabbit, Dog, Guinea Pig, Goat, Zebrafish (Danio rerio)
Host:	Rabbit
Clonality:	Polyclonal
Conjugate:	This UFSP2 antibody is un-conjugated
Application:	Western Blotting (WB)

Product Details

Immunogen:	The immunogen is a synthetic peptide directed towards the middle region of human C4orf20
Sequence:	TPVMIGGGVL AHTILGVAWN EITGQIKFLI LDPHYTGAED LQVILEKGWC
Predicted Reactivity:	Cow: 100%, Dog: 100%, Goat: 83%, Guinea Pig: 100%, Horse: 100%, Human: 100%, Mouse: 100%, Rabbit: 100%, Rat: 100%, Zebrafish: 86%
Characteristics:	This is a rabbit polyclonal antibody against C4orf20. It was validated on Western Blot using a cell lysate as a positive control.
Purification:	Affinity Purified

Target Details

Target:	UFSP2 (C4orf20)
---------	-----------------

Target Details

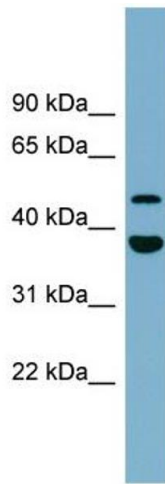
Alternative Name:	C4orf20 (C4orf20 Products)
Background:	The function of this protein remains unknown. Alias Symbols: FLJ11200, UFSP2, C4orf20 Protein Interaction Partner: ASCC1, UBC, LIG4, CAPN1, Protein Size: 469
Molecular Weight:	53 kDa
Gene ID:	55325
NCBI Accession:	NM_018359 , NP_060829
UniProt:	Q9NUQ7

Application Details

Application Notes:	Optimal working dilutions should be determined experimentally by the investigator.
Comment:	Antigen size: 469 AA
Restrictions:	For Research Use only

Handling

Format:	Liquid
Concentration:	Lot specific
Buffer:	Liquid. Purified antibody supplied in 1x PBS buffer with 0.09 % (w/v) sodium azide and 2 % sucrose.
Preservative:	Sodium azide
Precaution of Use:	This product contains Sodium azide: a POISONOUS AND HAZARDOUS SUBSTANCE which should be handled by trained staff only.
Handling Advice:	Avoid repeated freeze-thaw cycles.
Storage:	-20 °C
Storage Comment:	For short term use, store at 2-8°C up to 1 week. For long term storage, store at -20°C in small aliquots to prevent freeze-thaw cycles.



Western Blotting

Image 1. WB Suggested Anti-C4orf20 Antibody Titration:

0.2-1 ug/ml

Positive Control: Human heart