

Datasheet for ABIN2774184  
**anti-C16orf61 antibody (Middle Region)**[Go to Product page](#)

## 1 Image

## Overview

Quantity:	100 µL
Target:	C16orf61
Binding Specificity:	Middle Region
Reactivity:	Human, Mouse, Rat, Cow, Dog, Guinea Pig, Horse
Host:	Rabbit
Clonality:	Polyclonal
Conjugate:	This C16orf61 antibody is un-conjugated
Application:	Western Blotting (WB)

## Product Details

Immunogen:	The immunogen is a synthetic peptide directed towards the middle region of human C16orf61
Sequence:	NILKFFGYCN DVDRELKCL KNEYVENRTK SREHGAMRK KLFNPPEESE
Predicted Reactivity:	Cow: 77%, Dog: 86%, Guinea Pig: 79%, Horse: 79%, Human: 100%, Mouse: 79%, Rat: 77%
Characteristics:	This is a rabbit polyclonal antibody against C16orf61. It was validated on Western Blot using a cell lysate as a positive control.
Purification:	Affinity Purified

## Target Details

Target:	C16orf61
Alternative Name:	C16orf61 ( <a href="#">C16orf61 Products</a> )

## Target Details

Background:	The function of this protein remains unknown. Alias Symbols: 2310061C15Rik, DC13, C16orf61 Protein Interaction Partner: UBC, VHL, Protein Size: 79
-------------	---

Molecular Weight:	9 kDa
-------------------	-------

Gene ID:	56942
----------	-------

NCBI Accession:	<a href="#">NM_020188</a> , <a href="#">NP_064573</a>
-----------------	---

UniProt:	<a href="#">Q9NRP2</a>
----------	------------------------

## Application Details

Application Notes:	Optimal working dilutions should be determined experimentally by the investigator.
--------------------	--

Comment:	Antigen size: 79 AA
----------	---------------------

Restrictions:	For Research Use only
---------------	-----------------------

## Handling

Format:	Liquid
---------	--------

Concentration:	Lot specific
----------------	--------------

Buffer:	Liquid. Purified antibody supplied in 1x PBS buffer with 0.09 % (w/v) sodium azide and 2 % sucrose.
---------	---

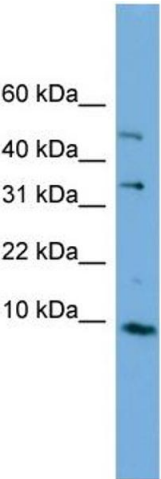
Preservative:	Sodium azide
---------------	--------------

Precaution of Use:	This product contains Sodium azide: a POISONOUS AND HAZARDOUS SUBSTANCE which should be handled by trained staff only.
--------------------	--

Handling Advice:	Avoid repeated freeze-thaw cycles.
------------------	------------------------------------

Storage:	-20 °C
----------	--------

Storage Comment:	For short term use, store at 2-8°C up to 1 week. For long term storage, store at -20°C in small aliquots to prevent freeze-thaw cycles.
------------------	---



**Western Blotting**

**Image 1.** WB Suggested Anti-C16orf61 Antibody Titration:  
0.2-1 ug/ml ELISA Titer: 1:1562500 Positive Control:  
Human kidney