

Datasheet for ABIN2774186  
**anti-RHOJ antibody (Middle Region)**

## 2 Images

[Go to Product page](#)

## Overview

|                      |  |
|----------------------|--|
| Quantity:            | 100 µL   |
| Target:              | RHOJ   |
| Binding Specificity: | Middle Region  |
| Reactivity:          | Human, Mouse, Guinea Pig, Horse, Rabbit, Cow, Rat, Dog, Zebrafish (Danio rerio),<br>Saccharomyces cerevisiae |
| Host:                | Rabbit   |
| Clonality:           | Polyclonal   |
| Conjugate:           | This RHOJ antibody is un-conjugated  |
| Application:         | Western Blotting (WB)  |

## Product Details

|                       |  |
|-----------------------|--|
| Immunogen:            | The immunogen is a synthetic peptide directed towards the middle region of human RHOJ  |
| Sequence:             | LGLYDTAGQE DYNQLRPLSY PNTDVFLICF SVVNPASYHN VQEEWVPELK   |
| Predicted Reactivity: | Cow: 100%, Dog: 100%, Guinea Pig: 100%, Horse: 100%, Human: 100%, Mouse: 100%, Rabbit:<br>100%, Rat: 100%, Yeast: 86%, Zebrafish: 100% |
| Characteristics:      | This is a rabbit polyclonal antibody against RHOJ. It was validated on Western Blot.   |
| Purification:         | Affinity Purified  |

## Target Details

|         |      |
|---------|------|
| Target: | RHOJ |
|---------|------|

## Target Details

|                   |   |
|-------------------|---|
| Alternative Name: | RHOJ ( <a href="#">RHOJ Products</a> )  |
| Background:       | <p>ARHJ belongs to the Rho family of small GTP-binding proteins. Rho proteins regulate the dynamic assembly of cytoskeletal components for several physiologic processes, such as cell proliferation and motility and the establishment of cell polarity. They are also involved in pathophysiologic process, such as cell transformation and metastasis.</p> <p>Alias Symbols: ARHJ, FLJ14445, MGC34777, RASL7B, TC10B, TCL</p> <p>Protein Interaction Partner: ADAMTSL4, CDC42EP1, SSX3, TRIP10, WASL, BHLHE40, BLZF1, PAK2, MEOX2, PARD6B, PAK6, DOCK8, DOCK10, BMPR1B, PAK1, SMAD2, SMAD4, WAS, TGFB1, CDC42, ACVR1,</p> <p>Protein Size: 214</p> |
| Molecular Weight: | 24 kDa  |
| Gene ID:          | 57381   |
| NCBI Accession:   | <a href="#">NM_020663</a> , <a href="#">NP_065714</a>   |
| UniProt:          | <a href="#">Q9ER71</a>  |

## Application Details

|                    |  |
|--------------------|--|
| Application Notes: | Optimal working dilutions should be determined experimentally by the investigator. |
| Comment:           | Antigen size: 214 AA   |
| Restrictions:      | For Research Use only  |

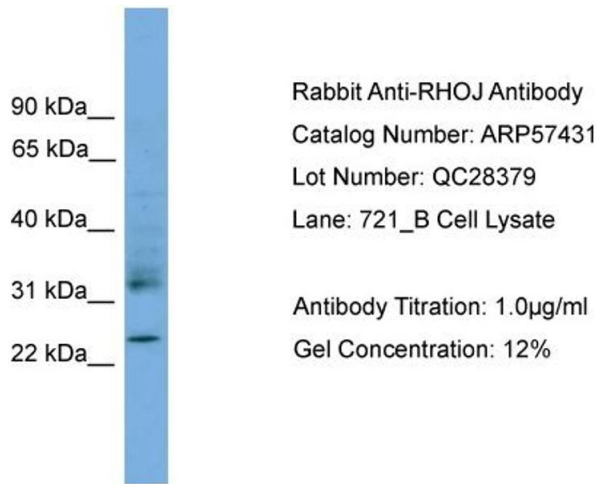
## Handling

|                    |  |
|--------------------|--|
| Format:            | Liquid   |
| Concentration:     | Lot specific   |
| Buffer:            | Liquid. Purified antibody supplied in 1x PBS buffer with 0.09 % (w/v) sodium azide and 2 % sucrose.                    |
| Preservative:      | Sodium azide   |
| Precaution of Use: | This product contains Sodium azide: a POISONOUS AND HAZARDOUS SUBSTANCE which should be handled by trained staff only. |
| Handling Advice:   | Avoid repeated freeze-thaw cycles.   |
| Storage:           | -20 °C   |

Handling

Storage Comment: For short term use, store at 2-8°C up to 1 week. For long term storage, store at -20°C in small aliquots to prevent freeze-thaw cycles.

Images

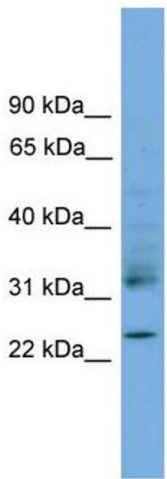


**Western Blotting**

**Image 1.** WB Suggested Anti-RHOJ

Antibody Titration: 0.2-1 µg/mL

Positive Control: 21\_B cell lysate



**Western Blotting**

**Image 2. WB Suggested Anti-RHOJ Antibody Titration:**

0.2-1 ug/ml

**Positive Control:** 721\_B cell lysate