

Datasheet for ABIN2774187
anti-KIF17 antibody (Middle Region)[Go to Product page](#)

1 Image

Overview

Quantity:	100 µL
Target:	KIF17
Binding Specificity:	Middle Region
Reactivity:	Human, Mouse, Rat, Horse, Rabbit, Cow, Dog, Guinea Pig
Host:	Rabbit
Clonality:	Polyclonal
Conjugate:	This KIF17 antibody is un-conjugated
Application:	Western Blotting (WB)

Product Details

Immunogen:	The immunogen is a synthetic peptide directed towards the middle region of mouse KIF17
Sequence:	TGWKNRAVG Y TLMNKDSSRS HSIFTINIEI YAVDERGKDH LRAGKLNLD
Predicted Reactivity:	Cow: 100%, Dog: 100%, Guinea Pig: 100%, Horse: 100%, Human: 100%, Mouse: 100%, Rabbit: 100%, Rat: 100%
Characteristics:	This is a rabbit polyclonal antibody against Kif17. It was validated on Western Blot.
Purification:	Affinity Purified

Target Details

Target:	KIF17
Alternative Name:	Kif17 (KIF17 Products)

Target Details

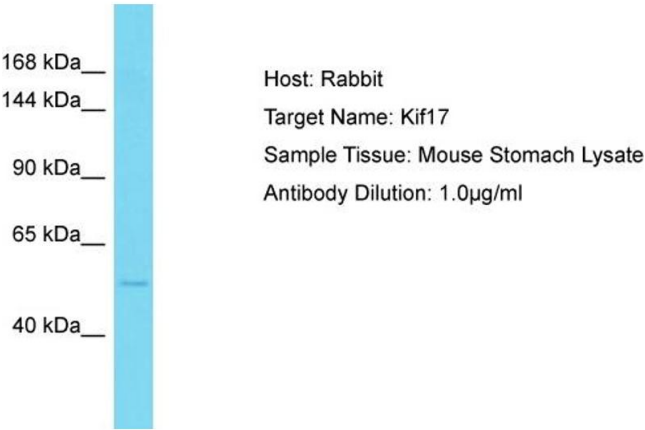
Background:	Alias Symbols: KIF3X, KLP-2, OSM-3, KIF17B Protein Size: 511
Molecular Weight:	56 kDa
Gene ID:	57576
NCBI Accession:	NM_001122819 , NP_001116291
UniProt:	Q9P2E2

Application Details

Application Notes:	Optimal working dilution should be determined by the investigator.
Restrictions:	For Research Use only

Handling

Format:	Liquid
Concentration:	1 mg/mL
Buffer:	Liquid. Purified antibody supplied in 1x PBS buffer with 0.09 % (w/v) sodium azide and 2 % sucrose.
Preservative:	Sodium azide
Precaution of Use:	This product contains Sodium azide: a POISONOUS AND HAZARDOUS SUBSTANCE which should be handled by trained staff only.
Handling Advice:	Avoid repeat freeze-thaw cycles.
Storage:	-20 °C
Storage Comment:	For short term use, store at 2-8°C up to 1 week. For long term storage, store at -20°C in small aliquots to prevent freeze-thaw cycles.



Western Blotting

Image 1. Host: Rabbit Target Name: Kif17 Sample Type: Mouse Stomach lysates Antibody Dilution: 1.0ug/ml