

Datasheet for ABIN2774190  
**anti-MASA antibody (N-Term)**[Go to Product page](#)

## 1 Image

## Overview

Quantity:	100 µL
Target:	MASA (ENOPH1)
Binding Specificity:	N-Term
Reactivity:	Human, Mouse, Rat, Cow, Dog, Horse, Rabbit, Guinea Pig
Host:	Rabbit
Clonality:	Polyclonal
Conjugate:	This MASA antibody is un-conjugated
Application:	Western Blotting (WB)

## Product Details

Immunogen:	The immunogen is a synthetic peptide directed towards the N terminal region of human ENOPH1
Sequence:	IEENVKEYLQ THWEEECQQ DVSLLRKQAE EDAHLDGAVP IPAASGNGVD
Predicted Reactivity:	Cow: 93%, Dog: 93%, Guinea Pig: 100%, Horse: 79%, Human: 100%, Mouse: 100%, Rabbit: 93%, Rat: 100%
Characteristics:	This is a rabbit polyclonal antibody against ENOPH1. It was validated on Western Blot using a cell lysate as a positive control.
Purification:	Affinity Purified

## Target Details

Target:	MASA (ENOPH1)
---------	---------------

## Target Details

Alternative Name:	ENOPH1 ( <a href="#">ENOPH1 Products</a> )
Background:	<p>ENOPH1 is a bifunctional enzyme that catalyzes the enolization of 2,3-diketo-5-methylthiopentyl-1-phosphate (DK-MTP-1-P) into the intermediate 2-hydroxy-3-keto-5-methylthiopentenyl-1-phosphate (HK-MTPenyl-1-P), which is then dephosphorylated to form the acireductone 1,2-dihydroxy-3-keto-5-methylthiopentene (DHK-MTPene).</p> <p>Alias Symbols: DKFZp586M0524, E1, FLJ12594, MASA, MST145</p> <p>Protein Interaction Partner: UBC, RAB10, RPS27,</p> <p>Protein Size: 261</p>
Molecular Weight:	29 kDa
Gene ID:	58478
NCBI Accession:	<a href="#">NM_021204</a> , <a href="#">NP_067027</a>
UniProt:	<a href="#">Q9UHY7</a>
Pathways:	<a href="#">Methionine Biosynthetic Process</a>

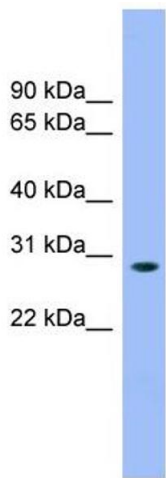
## Application Details

Application Notes:	Optimal working dilutions should be determined experimentally by the investigator.
Comment:	Antigen size: 261 AA
Restrictions:	For Research Use only

## Handling

Format:	Liquid
Concentration:	Lot specific
Buffer:	Liquid. Purified antibody supplied in 1x PBS buffer with 0.09 % (w/v) sodium azide and 2 % sucrose.
Preservative:	Sodium azide
Precaution of Use:	This product contains Sodium azide: a POISONOUS AND HAZARDOUS SUBSTANCE which should be handled by trained staff only.
Handling Advice:	Avoid repeated freeze-thaw cycles.
Storage:	-20 °C
Storage Comment:	For short term use, store at 2-8°C up to 1 week. For long term storage, store at -20°C in small

aliquots to prevent freeze-thaw cycles.



Western Blotting

**Image 1. WB Suggested Anti-ENOPH1 Antibody Titration:**

0.2-1 ug/ml

**ELISA Titer:** 1:1562500

**Positive Control:** Human Liver