

Datasheet for ABIN2774194

**anti-C17orf75 antibody (Middle Region)**[Go to Product page](#)**1** Image

## Overview

Quantity:	100 µL
Target:	C17orf75
Binding Specificity:	Middle Region
Reactivity:	Human, Rat, Mouse, Cow, Dog, Rabbit, Guinea Pig, Horse, Zebrafish (Danio rerio)
Host:	Rabbit
Clonality:	Polyclonal
Conjugate:	This C17orf75 antibody is un-conjugated
Application:	Western Blotting (WB)

## Product Details

Immunogen:	The immunogen is a synthetic peptide directed towards the middle region of human C17orf75
Sequence:	KLKAIQDTNN LKRFIRQAEM NHYALFKCYM FLKNCGSGDI LLKIVKVEHE
Predicted Reactivity:	Cow: 100%, Dog: 100%, Guinea Pig: 100%, Horse: 100%, Human: 100%, Mouse: 100%, Rabbit: 100%, Rat: 100%, Zebrafish: 93%
Characteristics:	This is a rabbit polyclonal antibody against C17orf75. It was validated on Western Blot using a cell lysate as a positive control.
Purification:	Affinity Purified

## Target Details

Target:	C17orf75
---------	----------

## Target Details

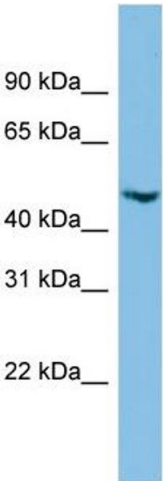
Alternative Name:	C17orf75 ( <a href="#">C17orf75 Products</a> )
Background:	The function of this protein remains unknown. Alias Symbols: NJMU-R1 Protein Interaction Partner: HUWE1, UBD, Protein Size: 396
Molecular Weight:	44 kDa
Gene ID:	64149
NCBI Accession:	<a href="#">NM_022344</a> , <a href="#">NP_071739</a>
UniProt:	<a href="#">Q9HAS0</a>

## Application Details

Application Notes:	Optimal working dilutions should be determined experimentally by the investigator.
Comment:	Antigen size: 396 AA
Restrictions:	For Research Use only

## Handling

Format:	Liquid
Concentration:	Lot specific
Buffer:	Liquid. Purified antibody supplied in 1x PBS buffer with 0.09 % (w/v) sodium azide and 2 % sucrose.
Preservative:	Sodium azide
Precaution of Use:	This product contains Sodium azide: a POISONOUS AND HAZARDOUS SUBSTANCE which should be handled by trained staff only.
Handling Advice:	Avoid repeated freeze-thaw cycles.
Storage:	-20 °C
Storage Comment:	For short term use, store at 2-8°C up to 1 week. For long term storage, store at -20°C in small aliquots to prevent freeze-thaw cycles.



Western Blotting

**Image 1.** WB Suggested Anti-C17orf75 Antibody Titration:  
0.2-1 ug/ml ELISA Titer: 1:312500 Positive Control: HepG2  
cell lysate