

Datasheet for ABIN2774200 anti-OXR1 antibody (N-Term)



[Go to Product page](#)

1 Image

1 Publication

Overview

Quantity:	100 µL
Target:	OXR1
Binding Specificity:	N-Term
Reactivity:	Human, Mouse, Rat, Horse, Cow, Rabbit, Dog, Guinea Pig, Zebrafish (Danio rerio)
Host:	Rabbit
Clonality:	Polyclonal
Conjugate:	This OXR1 antibody is un-conjugated
Application:	Western Blotting (WB)

Product Details

Immunogen:	The immunogen is a synthetic peptide directed towards the N terminal region of human OXR1
Sequence:	VESSPSLSPV SPLSPTSSEA EFDKTTNPDV HPTEATPSST FTGIRPARVV
Predicted Reactivity:	Cow: 86%, Dog: 100%, Guinea Pig: 100%, Horse: 100%, Human: 100%, Mouse: 100%, Rabbit: 100%, Rat: 100%, Zebrafish: 79%
Characteristics:	This is a rabbit polyclonal antibody against OXR1. It was validated on Western Blot using a cell lysate as a positive control.
Purification:	Affinity Purified

Target Details

Target:	OXR1
---------	------

Target Details

Alternative Name:	OXR1 (OXR1 Products)
Background:	OXR1 may be involved in protection from oxidative damage. Alias Symbols: FLJ10125, FLJ38829, FLJ41673, FLJ42450, FLJ45656, Nbla00307 Protein Interaction Partner: KEAP1, VPS35, TOLLIP, NMI, RPL24, GTF2E1, LIG4, Protein Size: 758
Molecular Weight:	85 kDa
Gene ID:	55074
NCBI Accession:	NM_181354 , NP_851999
UniProt:	Q8N573

Application Details

Application Notes:	Optimal working dilutions should be determined experimentally by the investigator.
Comment:	Antigen size: 758 AA
Restrictions:	For Research Use only

Handling

Format:	Liquid
Concentration:	Lot specific
Buffer:	Liquid. Purified antibody supplied in 1x PBS buffer with 0.09 % (w/v) sodium azide and 2 % sucrose.
Preservative:	Sodium azide
Precaution of Use:	This product contains Sodium azide: a POISONOUS AND HAZARDOUS SUBSTANCE which should be handled by trained staff only.
Handling Advice:	Avoid repeated freeze-thaw cycles.
Storage:	-20 °C
Storage Comment:	For short term use, store at 2-8°C up to 1 week. For long term storage, store at -20°C in small aliquots to prevent freeze-thaw cycles.

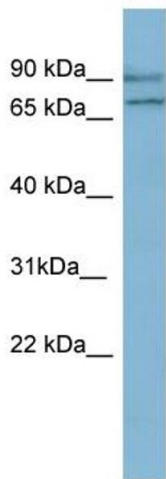
Publications

Product cited in: Ewing, Chu, Elisma, Li, Taylor, Climie, McBroom-Cerajewski, Robinson, OConnor, Li, Taylor,

Publications

Dharsee, Ho, Heilbut, Moore, Zhang, Ornatsky, Bukhman, Ethier, Sheng, Vasilescu, Abu-Farha, Lambert, Duewel et al.: "Large-scale mapping of human protein-protein interactions by mass spectrometry. ..." in: **Molecular systems biology**, Vol. 3, pp. 89, (2007) ([PubMed](#)).

Images



Western Blotting

Image 1. WB Suggested Anti-OXR1 Antibody Titration:

0.2-1 ug/ml

ELISA Titer: 1:62500

Positive Control: NCI-H226 cell lysate