



[Go to Product page](#)

Datasheet for ABIN2774210

## anti-HTATSF1 antibody (Middle Region)

1 Image

1 Publication

### Overview

Quantity:	100 µL
Target:	HTATSF1
Binding Specificity:	Middle Region
Reactivity:	Human, Mouse, Rat, Dog, Rabbit, Saccharomyces cerevisiae, Pig, Zebrafish (Danio rerio)
Host:	Rabbit
Clonality:	Polyclonal
Conjugate:	This HTATSF1 antibody is un-conjugated
Application:	Western Blotting (WB)

### Product Details

Immunogen:	The immunogen is a synthetic peptide directed towards the middle region of human HTATSF1
Sequence:	DEEGSEREFD EDSDEKEEEE DTYEKVFDDE SDEKEDEEYA DEKGLEAADK
Predicted Reactivity:	Dog: 86%, Human: 100%, Mouse: 90%, Pig: 86%, Rabbit: 93%, Rat: 100%, Yeast: 82%, Zebrafish: 75%
Characteristics:	This is a rabbit polyclonal antibody against HTATSF1. It was validated on Western Blot using a cell lysate as a positive control.
Purification:	Affinity Purified

### Target Details

Target:	HTATSF1
---------	---------

## Target Details

---

Alternative Name:	HTATSF1 ( <a href="#">HTATSF1 Products</a> )
Background:	<p>Whereas most DNA sequence-specific transcription factors increase the rate of initiation and interact with enhancer or promoter DNA, human immunodeficiency virus-1 (HIV-1) Tat predominantly stimulates elongation and interacts with the trans-acting responsive (TAR) RNA element. Tat is essential for HIV replication. Whereas most DNA sequence-specific transcription factors increase the rate of initiation and interact with enhancer or promoter DNA, human immunodeficiency virus-1 (HIV-1) Tat predominantly stimulates elongation and interacts with the trans-acting responsive (TAR) RNA element. Tat is essential for HIV replication. [supplied by OMIM]. Publication Note: This RefSeq record includes a subset of the publications that are available for this gene. Please see the Entrez Gene record to access additional publications.</p> <p>Alias Symbols: TAT-SF1, dJ196E23.2</p> <p>Protein Interaction Partner: UBC, WBP4, POLR2E, APBB1, ZNF512B, SRSF4, CSNK2A1, NOTCH1, PGK1, DYNC1H1, NAF1, KATNAL2, FAM129B, POP1, SRRM1, AP3D1, SFPQ, PTBP1, FYTDD1, CUL3, ARRB2, SF3A2, SUMO2, Sf3a1, SUPT4H1, CDK9, FEZ1, POLR2A, SNRPB2, SUPT5H, HTATSF1, GTF2F2, SNRNP70, CCNT1, SNRP</p> <p>Protein Size: 755</p>
Molecular Weight:	86 kDa
Gene ID:	27336
NCBI Accession:	<a href="#">NM_014500</a> , <a href="#">NP_055315</a>
UniProt:	<a href="#">O43719</a>

## Application Details

---

Application Notes:	Optimal working dilutions should be determined experimentally by the investigator.
Comment:	Antigen size: 755 AA
Restrictions:	For Research Use only

## Handling

---

Format:	Liquid
Concentration:	Lot specific
Buffer:	Liquid. Purified antibody supplied in 1x PBS buffer with 0.09 % (w/v) sodium azide and 2 % sucrose.

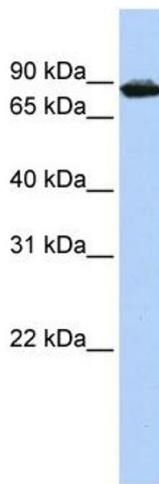
## Handling

Preservative:	Sodium azide
Precaution of Use:	This product contains Sodium azide: a POISONOUS AND HAZARDOUS SUBSTANCE which should be handled by trained staff only.
Handling Advice:	Avoid repeated freeze-thaw cycles.
Storage:	-20 °C
Storage Comment:	For short term use, store at 2-8°C up to 1 week. For long term storage, store at -20°C in small aliquots to prevent freeze-thaw cycles.

## Publications

Product cited in: Ewing, Chu, Elisma, Li, Taylor, Climie, McBroom-Cerajewski, Robinson, OConnor, Li, Taylor, Dharsee, Ho, Heilbut, Moore, Zhang, Ornatsky, Bukhman, Ethier, Sheng, Vasilescu, Abu-Farha, Lambert, Duewel et al.: "Large-scale mapping of human protein-protein interactions by mass spectrometry. ..." in: **Molecular systems biology**, Vol. 3, pp. 89, (2007) ([PubMed](#)).

## Images



### Western Blotting

#### Image 1. WB Suggested Anti-HTATSF1 Antibody Titration:

0.2-1 ug/ml

**ELISA Titer:** 1:12500

**Positive Control:** HepG2 cell lysate