

Datasheet for ABIN2774220
anti-NPM2 antibody (N-Term)[Go to Product page](#)

1 Image

Overview

Quantity:	100 µL
Target:	NPM2
Binding Specificity:	N-Term
Reactivity:	Human, Horse
Host:	Rabbit
Clonality:	Polyclonal
Conjugate:	This NPM2 antibody is un-conjugated
Application:	Western Blotting (WB)

Product Details

Immunogen:	The immunogen is a synthetic peptide directed towards the N terminal region of human NPM2
Sequence:	LEGKQSCRLL LHTICLGEKA KEEMHRVEIL PPAHQEDKKM QPVTIASLQA
Predicted Reactivity:	Horse: 77%, Human: 100%
Characteristics:	This is a rabbit polyclonal antibody against NPM2. It was validated on Western Blot using a cell lysate as a positive control.
Purification:	Affinity Purified

Target Details

Target:	NPM2
Alternative Name:	NPM2 (NPM2 Products)

Target Details

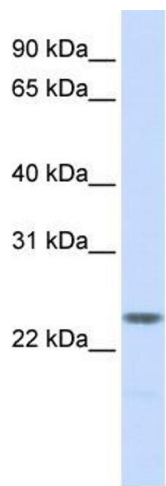
Background:	NPM2 belongs to the nucleoplasmin family. It probably involved in sperm DNA decondensation during fertilization. Alias Symbols: MGC78655 Protein Interaction Partner: PLEKHF2, SDCBP2, NPM3, NPM1, SRPK2, Protein Size: 214
Molecular Weight:	24 kDa
Gene ID:	10361
NCBI Accession:	NM_182795 , NP_877724
UniProt:	Q86SE8

Application Details

Application Notes:	Optimal working dilutions should be determined experimentally by the investigator.
Comment:	Antigen size: 214 AA
Restrictions:	For Research Use only

Handling

Format:	Liquid
Concentration:	Lot specific
Buffer:	Liquid. Purified antibody supplied in 1x PBS buffer with 0.09 % (w/v) sodium azide and 2 % sucrose.
Preservative:	Sodium azide
Precaution of Use:	This product contains Sodium azide: a POISONOUS AND HAZARDOUS SUBSTANCE which should be handled by trained staff only.
Handling Advice:	Avoid repeated freeze-thaw cycles.
Storage:	-20 °C
Storage Comment:	For short term use, store at 2-8°C up to 1 week. For long term storage, store at -20°C in small aliquots to prevent freeze-thaw cycles.



Western Blotting

Image 1. WB Suggested Anti-NPM2 Antibody Titration:

0.2-1 ug/ml

ELISA Titer: 1:312500

Positive Control: Human Placenta