

Datasheet for ABIN2774247
anti-SPATA2 antibody (N-Term)



[Go to Product page](#)

1 Image

Overview

Quantity:	100 µL
Target:	SPATA2
Binding Specificity:	N-Term
Reactivity:	Human, Rat, Mouse, Dog, Horse, Guinea Pig, Cow, Rabbit
Host:	Rabbit
Clonality:	Polyclonal
Conjugate:	This SPATA2 antibody is un-conjugated
Application:	Western Blotting (WB)

Product Details

Immunogen:	The immunogen is a synthetic peptide directed towards the N-terminal region of human SPATA2
Sequence:	SRVALQKSAS ERAAKDYYKP RVTKPSRSVD AYDSYWESRK PPLKASLSLR
Predicted Reactivity:	Cow: 100%, Dog: 100%, Guinea Pig: 100%, Horse: 100%, Human: 100%, Mouse: 100%, Rabbit: 100%, Rat: 100%
Characteristics:	This is a rabbit polyclonal antibody against SPATA2. It was validated on Western Blot.
Purification:	Affinity Purified

Target Details

Target:	SPATA2
---------	--------

Target Details

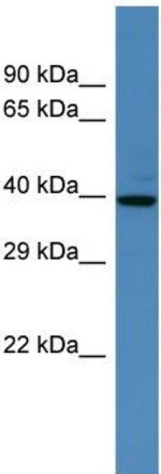
Alternative Name:	SPATA2 (SPATA2 Products)
Background:	Alias Symbols: PD1, tamo, PPP1R145 Protein Size: 383
Molecular Weight:	42 kDa
Gene ID:	9825
NCBI Accession:	NM_001135773 , NP_001129245
UniProt:	Q9UM82

Application Details

Application Notes:	Optimal working dilution should be determined by the investigator.
Restrictions:	For Research Use only

Handling

Format:	Liquid
Concentration:	1 mg/mL
Buffer:	Liquid. Purified antibody supplied in 1x PBS buffer with 0.09 % (w/v) sodium azide and 2 % sucrose.
Preservative:	Sodium azide
Precaution of Use:	This product contains Sodium azide: a POISONOUS AND HAZARDOUS SUBSTANCE which should be handled by trained staff only.
Handling Advice:	Avoid repeat freeze-thaw cycles.
Storage:	-20 °C
Storage Comment:	For short term use, store at 2-8°C up to 1 week. For long term storage, store at -20°C in small aliquots to prevent freeze-thaw cycles.



Western Blotting

Image 1.