

Datasheet for ABIN2774251  
**anti-OTUD6A antibody (N-Term)**[Go to Product page](#)

## 3 Images

## Overview

Quantity:	100 µL
Target:	OTUD6A
Binding Specificity:	N-Term
Reactivity:	Human
Host:	Rabbit
Clonality:	Polyclonal
Conjugate:	This OTUD6A antibody is un-conjugated
Application:	Western Blotting (WB)

## Product Details

Immunogen:	The immunogen is a synthetic peptide directed towards the N terminal region of human OTUD6A
Sequence:	MEAEMAQKHR QELEKFQDDS SIESVVEDLA KMNLENRPPR SSKAHRKRER
Predicted Reactivity:	Human: 100%
Characteristics:	This is a rabbit polyclonal antibody against OTUD6A. It was validated on Western Blot.
Purification:	Affinity Purified

## Target Details

Target:	OTUD6A
Alternative Name:	OTUD6A ( <a href="#">OTUD6A Products</a> )

## Target Details

Background: Deubiquitinating enzymes (DUBs, see MIM 603478) are proteases that specifically cleave ubiquitin (MIM 191339) linkages, negating the action of ubiquitin ligases. DUBA2 belongs to a DUB subfamily characterized by an ovarian tumor (OTU) domain.

Alias Symbols: DUBA2, FLJ25831, HSHIN6

Protein Interaction Partner: UBC, TRIM5, TRIM46, TRIM39, CBLC, RBCK1, RNF2,

Protein Size: 288

Molecular Weight: 32 kDa

Gene ID: 139562

NCBI Accession: [NM\\_207320](#), [NP\\_997203](#)

UniProt: [Q7L8S5](#)

## Application Details

Application Notes: Optimal working dilutions should be determined experimentally by the investigator.

Comment: Antigen size: 288 AA

Restrictions: For Research Use only

## Handling

Format: Liquid

Concentration: Lot specific

Buffer: Liquid. Purified antibody supplied in 1x PBS buffer with 0.09 % (w/v) sodium azide and 2 % sucrose.

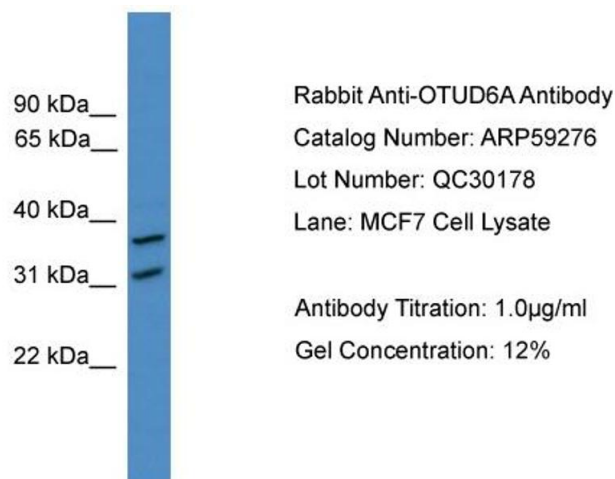
Preservative: Sodium azide

Precaution of Use: This product contains Sodium azide: a POISONOUS AND HAZARDOUS SUBSTANCE which should be handled by trained staff only.

Handling Advice: Avoid repeated freeze-thaw cycles.

Storage: -20 °C

Storage Comment: For short term use, store at 2-8°C up to 1 week. For long term storage, store at -20°C in small aliquots to prevent freeze-thaw cycles.

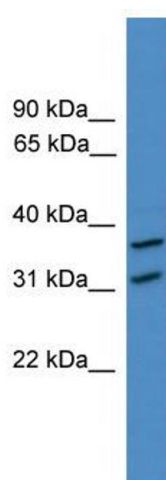


#### Western Blotting

##### Image 1. WB Suggested Anti-OTUD6A

Antibody Titration: 0.2-1 µg/mL ELISA Titer: 1:12500

Positive Control: MCF7 cell lysate



#### Western Blotting

##### Image 2. WB Suggested Anti-OTUD6A Antibody Titration:

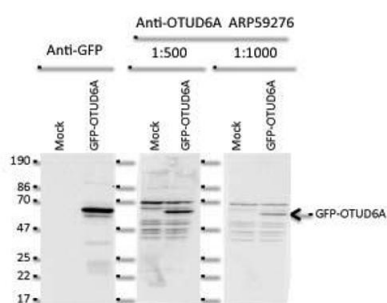
0.2-1 µg/ml

**ELISA Titer:** 1:312500

**Positive Control:** MCF7 cell lysate

## OTUD6A

HeLa cells transfected with plasmid expressing GFP-tagged OTUD6A



#### Western Blotting

##### Image 3. WB Suggested Anti-OTUD6A Antibody

**Titration:** 2 µg/ml

**Positive Control:** Human HeLa Cell line

See Immunoblot 2 Data and Customer Feedback tab for more information.