

Datasheet for ABIN2774252  
**anti-UCHL3 antibody (C-Term)**



[Go to Product page](#)

2 Images

## Overview

|                      |   |
|----------------------|---|
| Quantity:            | 100 µL  |
| Target:              | UCHL3 (Uchl3)   |
| Binding Specificity: | C-Term  |
| Reactivity:          | Human, Rat, Mouse, Cow, Horse, Dog, Rabbit, Guinea Pig, Zebrafish (Danio rerio) |
| Host:                | Rabbit  |
| Clonality:           | Polyclonal  |
| Conjugate:           | This UCHL3 antibody is un-conjugated  |
| Application:         | Western Blotting (WB)   |

## Product Details

|                       |  |
|-----------------------|--|
| Immunogen:            | The immunogen is a synthetic peptide directed towards the C terminal region of human UCHL3                             |
| Sequence:             | YELDGRKPFP INHGETSDET LLEDAIEVCK KFMERDPDEL RFNAIALSAA   |
| Predicted Reactivity: | Cow: 100%, Dog: 100%, Guinea Pig: 100%, Horse: 100%, Human: 100%, Mouse: 100%, Rabbit: 100%, Rat: 100%, Zebrafish: 85% |
| Characteristics:      | This is a rabbit polyclonal antibody against UCHL3. It was validated on Western Blot.                                  |
| Purification:         | Affinity Purified  |

## Target Details

|                   |  |
|-------------------|--|
| Target:           | UCHL3 (Uchl3)                            |
| Alternative Name: | UCHL3 ( <a href="#">Uchl3 Products</a> ) |

## Target Details

|                   |   |
|-------------------|---|
| Background:       | <p>UCHL3 is an ubiquitin-protein hydrolase involved both in the processing of ubiquitin precursors and of ubiquitinated proteins. This enzyme is a thiol protease that recognizes and hydrolyzes a peptide bond at the C-terminal glycine of either ubiquitin or NEDD8.</p> <p>Alias Symbols: UCH-L3</p> <p>Protein Interaction Partner: UBC, CDH1, BAG3, LONRF1, TRIM27, TTC9C, NT5DC1, UBR1, UNK, UBL7, ZFYVE19, USP48, UBA6, ZNF593, UBQLN1, VPS33B, UBXN7, AHCYL1, SSSCA1, YAP1, UBE4B, USP34, ZRANB2, ATP6V1F, USP9X, USP5, ZYX, UBE2V1, UBE2L3, UBE2A, TTC1, TSN, SULT1A1, SNRPD1, PCMT1, PBX1, CS</p> <p>Protein Size: 230</p> |
| Molecular Weight: | 25 kDa  |
| Gene ID:          | 7347  |
| NCBI Accession:   | <a href="#">NM_006002</a> , <a href="#">NP_005993</a>   |
| UniProt:          | <a href="#">P15374</a>  |
| Pathways:         | <a href="#">Feeding Behaviour</a> , <a href="#">Positive Regulation of fat Cell Differentiation</a>   |

## Application Details

|                    |  |
|--------------------|--|
| Application Notes: | Optimal working dilutions should be determined experimentally by the investigator. |
| Comment:           | Antigen size: 230 AA   |
| Restrictions:      | For Research Use only  |

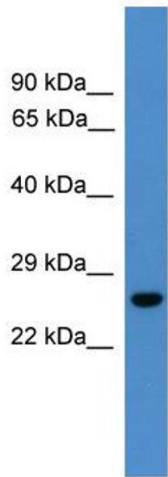
## Handling

|                    |  |
|--------------------|--|
| Format:            | Liquid   |
| Concentration:     | Lot specific   |
| Buffer:            | Liquid. Purified antibody supplied in 1x PBS buffer with 0.09 % (w/v) sodium azide and 2 % sucrose.                    |
| Preservative:      | Sodium azide   |
| Precaution of Use: | This product contains Sodium azide: a POISONOUS AND HAZARDOUS SUBSTANCE which should be handled by trained staff only. |
| Handling Advice:   | Avoid repeated freeze-thaw cycles.   |
| Storage:           | -20 °C   |

Handling

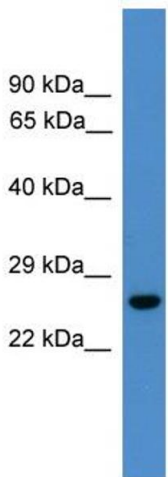
Storage Comment: For short term use, store at 2-8°C up to 1 week. For long term storage, store at -20°C in small aliquots to prevent freeze-thaw cycles.

Images



**Western Blotting**

**Image 1. WB Suggested Anti-UCHL3 Antibody Titration:**  
0.2-1 ug/ml  
**ELISA Titer:** 1:312500  
**Positive Control:** Human Liver



Rabbit Anti-UCHL3 Antibody  
Catalog Number: ARP59297  
Lot Number: QC30196  
Lane: Fetal Liver Lysate  
  
Antibody Titration: 1.0µg/ml  
Gel Concentration: 12%

**Western Blotting**

**Image 2. WB Suggested Anti-UCHL3**  
Antibody Titration: 0.2-1 µg/mL ELISA Titer: 1:12500  
Positive Control: Human Liver