

Datasheet for ABIN2774258  
**anti-Synaptoporin antibody (Middle Region)**[Go to Product page](#)

## 2 Images

## Overview

Quantity:	100 µL
Target:	Synaptoporin (SYNPR)
Binding Specificity:	Middle Region
Reactivity:	Human, Rat, Mouse, Dog, Guinea Pig, Rabbit, Horse, Zebrafish (Danio rerio), Cow
Host:	Rabbit
Clonality:	Polyclonal
Conjugate:	This Synaptoporin antibody is un-conjugated
Application:	Western Blotting (WB)

## Product Details

Immunogen:	The immunogen is a synthetic peptide corresponding to a region of Mouse
Sequence:	LVGDSSSSAE FFVTVAVFAF LYSLAATVVY IFFQNKYREN NRGPLIDFIV
Predicted Reactivity:	Cow: 100%, Dog: 100%, Guinea Pig: 100%, Horse: 100%, Human: 100%, Mouse: 100%, Rabbit: 100%, Rat: 100%, Zebrafish: 100%
Characteristics:	This is a rabbit polyclonal antibody against Synpr. It was validated on Western Blot.
Purification:	Affinity Purified

## Target Details

Target:	Synaptoporin (SYNPR)
Alternative Name:	Synpr ( <a href="#">SYNPR Products</a> )

## Target Details

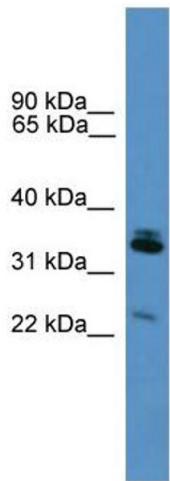
Background:	Synpr is the intrinsic membrane protein of small synaptic vesicles. Synpr is a probable vesicular channel protein. Alias Symbols: 1500003F20Rik, SPO Protein Size: 285
Molecular Weight:	31 kDa
Gene ID:	72003
NCBI Accession:	<a href="#">NM_028052</a> , <a href="#">NP_082328</a>

## Application Details

Application Notes:	Optimal working dilutions should be determined experimentally by the investigator.
Comment:	Antigen size: 285 AA
Restrictions:	For Research Use only

## Handling

Format:	Liquid
Concentration:	Lot specific
Buffer:	Liquid. Purified antibody supplied in 1x PBS buffer with 0.09 % (w/v) sodium azide and 2 % sucrose.
Preservative:	Sodium azide
Precaution of Use:	This product contains Sodium azide: a POISONOUS AND HAZARDOUS SUBSTANCE which should be handled by trained staff only.
Handling Advice:	Avoid repeated freeze-thaw cycles.
Storage:	-20 °C
Storage Comment:	For short term use, store at 2-8°C up to 1 week. For long term storage, store at -20°C in small aliquots to prevent freeze-thaw cycles.



**Western Blotting**

**Image 1. WB Suggested Anti-Synpr Antibody Titration:**  
0.2-1 ug/ml  
**ELISA Titer:** 1:312500  
**Positive Control:** Mouse Lung



**Rabbit Anti-Synpr Antibody**  
**Catalog Number:** ARP59472  
**Lot Number:** QC30434  
**Lane:** Mouse Lung Lysate  
  
**Antibody Titration:** 1.0µg/ml  
**Gel Concentration:** 12%

**Western Blotting**

**Image 2. WB Suggested Anti-Synpr**  
Antibody Titration: 0.2-1 µg/mL ELISA Titer: 1::12500  
Positive Control: Mouse Lung