

Datasheet for ABIN2774271  
**anti-Lcor antibody (C-Term)**[Go to Product page](#)

## 2 Images

## Overview

Quantity:	100 µL
Target:	Lcor
Binding Specificity:	C-Term
Reactivity:	Human, Mouse, Rat, Cow, Dog, Guinea Pig, Horse, Rabbit, Zebrafish (Danio rerio)
Host:	Rabbit
Clonality:	Polyclonal
Conjugate:	This Lcor antibody is un-conjugated
Application:	Western Blotting (WB)

## Product Details

Immunogen:	The immunogen is a synthetic peptide directed towards the C terminal region of human LCOR
Sequence:	EGDPGSKQPR KKRGRYRQYN SEILEEAISV VMSGKMSVSK AQSIYGIPHS
Predicted Reactivity:	Cow: 100%, Dog: 100%, Guinea Pig: 100%, Horse: 100%, Human: 100%, Mouse: 100%, Rabbit: 100%, Rat: 100%, Zebrafish: 93%
Characteristics:	This is a rabbit polyclonal antibody against LCOR. It was validated on Western Blot.
Purification:	Affinity Purified

## Target Details

Target:	Lcor
Alternative Name:	LCOR ( <a href="#">Lcor Products</a> )

## Target Details

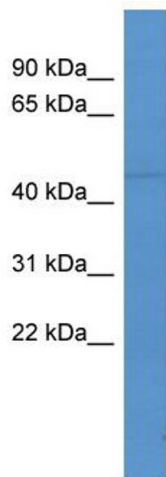
Background:	<p>LCOR is a transcriptional corepressor widely expressed in fetal and adult tissues that is recruited to agonist-bound nuclear receptors through a single LxxLL motif, also referred to as a nuclear receptor (NR) box (Fernandes et al., 2003 [PubMed 12535528]).</p> <p>Alias Symbols: FLJ38026, KIAA1795, MLR2, RP11-175019.1</p> <p>Protein Interaction Partner: TRAF1, GOLGA2, CTBP2, CTBP1, AR, KLF6, HDAC6, HDAC4, VDR, HDAC1, ESR1, HDAC3,</p> <p>Protein Size: 433</p>
Molecular Weight:	47 kDa
Gene ID:	84458
NCBI Accession:	<a href="#">NM_032440</a> , <a href="#">NP_115816</a>
UniProt:	<a href="#">Q96JN0</a>

## Application Details

Application Notes:	Optimal working dilutions should be determined experimentally by the investigator.
Comment:	Antigen size: 433 AA
Restrictions:	For Research Use only

## Handling

Format:	Liquid
Concentration:	Lot specific
Buffer:	Liquid. Purified antibody supplied in 1x PBS buffer with 0.09 % (w/v) sodium azide and 2 % sucrose.
Preservative:	Sodium azide
Precaution of Use:	This product contains Sodium azide: a POISONOUS AND HAZARDOUS SUBSTANCE which should be handled by trained staff only.
Handling Advice:	Avoid repeated freeze-thaw cycles.
Storage:	-20 °C
Storage Comment:	For short term use, store at 2-8°C up to 1 week. For long term storage, store at -20°C in small aliquots to prevent freeze-thaw cycles.

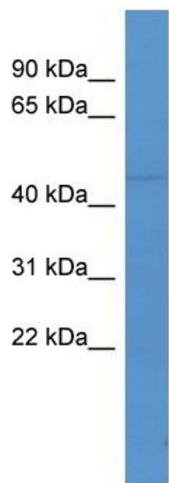


Western Blotting

**Image 1. WB Suggested Anti-LCOR Antibody Titration:** 0.2-1 ug/ml

**ELISA Titer:** 1:62500

**Positive Control:** MCF7 cell lysate



Rabbit Anti-LCOR Antibody  
Catalog Number: ARP59844  
Lot Number: QC30773  
Lane: MCF7 Cell Lysate

Antibody Titration: 1.0µg/ml  
Gel Concentration: 12%

Western Blotting

**Image 2. WB Suggested Anti-LCOR**

Antibody Titration: 0.2-1 µg/mL ELISA Titer: 1::2500

Positive Control: MCF7 cell lysate