

Datasheet for ABIN2774273
anti-MRGPRX3 antibody (C-Term)



[Go to Product page](#)

1 Image

Overview

Quantity:	100 µL
Target:	MRGPRX3
Binding Specificity:	C-Term
Reactivity:	Human
Host:	Rabbit
Clonality:	Polyclonal
Conjugate:	This MRGPRX3 antibody is un-conjugated
Application:	Western Blotting (WB)

Product Details

Immunogen:	The immunogen is a synthetic peptide directed towards the C terminal region of human MRGPRX3
Sequence:	LDWKVLFCHV HLVSIFLSAL NSSANPIYF FVGSFRQRQN RQNLKLVLQR
Predicted Reactivity:	Human: 100%
Characteristics:	This is a rabbit polyclonal antibody against MRGPRX3. It was validated on Western Blot.
Purification:	Affinity Purified

Target Details

Target:	MRGPRX3
Alternative Name:	MRGPRX3 (MRGPRX3 Products)

Target Details

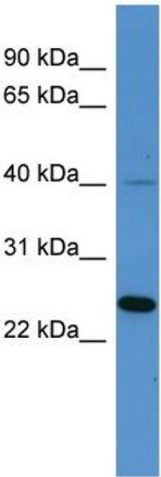
Background:	<p>This gene encodes a member of the mas-related/sensory neuron specific subfamily of G protein coupled receptors. The encoded protein may be involved in sensory neuron regulation and in the modulation of pain.</p> <p>Alias Symbols: GPCR, MRGX3, SNSR1, SNSR2</p> <p>Protein Size: 322</p>
Molecular Weight:	36 kDa
Gene ID:	117195
NCBI Accession:	NM_054031 , NP_473372
UniProt:	Q96LA9

Application Details

Application Notes:	Optimal working dilutions should be determined experimentally by the investigator.
Comment:	Antigen size: 322 AA
Restrictions:	For Research Use only

Handling

Format:	Liquid
Concentration:	Lot specific
Buffer:	Liquid. Purified antibody supplied in 1x PBS buffer with 0.09 % (w/v) sodium azide and 2 % sucrose.
Preservative:	Sodium azide
Precaution of Use:	This product contains Sodium azide: a POISONOUS AND HAZARDOUS SUBSTANCE which should be handled by trained staff only.
Handling Advice:	Avoid repeated freeze-thaw cycles.
Storage:	-20 °C
Storage Comment:	For short term use, store at 2-8°C up to 1 week. For long term storage, store at -20°C in small aliquots to prevent freeze-thaw cycles.



Western Blotting

Image 1. WB Suggested Anti-MRGPRX3 Antibody Titration:
0.2-1 ug/ml ELISA Titer: 1:62500 Positive Control: Hela cell lysate