

Datasheet for ABIN2774276

**anti-CNTF Receptor alpha antibody (C-Term)****2** Images[Go to Product page](#)

## Overview

Quantity:	100 µL
Target:	CNTF Receptor alpha (CNTFR)
Binding Specificity:	C-Term
Reactivity:	Human, Mouse, Rat, Dog, Cow, Horse, Rabbit, Guinea Pig, Sheep
Host:	Rabbit
Clonality:	Polyclonal
Conjugate:	This CNTF Receptor alpha antibody is un-conjugated
Application:	Western Blotting (WB)

## Product Details

Immunogen:	The immunogen is a synthetic peptide directed towards the C terminal region of human CNTFR
Sequence:	VAAHATPWTE EPRHLTTEAQ AAETTTSTTS SLAPPPTTKI CDPGELGSGG
Predicted Reactivity:	Cow: 93%, Dog: 93%, Guinea Pig: 93%, Horse: 93%, Human: 100%, Mouse: 93%, Rabbit: 93%, Rat: 93%, Sheep: 93%
Characteristics:	This is a rabbit polyclonal antibody against CNTFR. It was validated on Western Blot.
Purification:	Affinity Purified

## Target Details

Target:	CNTF Receptor alpha (CNTFR)
Alternative Name:	CNTFR ( <a href="#">CNTFR Products</a> )

## Target Details

Background:	<p>This gene encodes a hematopoietin/interferon-class receptor belonging to the cytokine superfamily of receptors. The encoded gene product represents the CNTF-specific alpha subunit of a heterotrimer forming the CNTF receptor complex, which also includes LIFR and gp130. The receptor is attached to the membrane by a glycosyl-phosphatidylinositol linkage and contains an immunoglobulin-like C2-type domain and a fibronectin type-III domain. Signal transduction requires that CNTF bind first to this alpha component, which permits the recruitment of gp130 and LIFR beta to form the tripartite receptor complex. Signal transduction stimulates gene expression, cell survival or differentiation in a variety of neuronal cell types. Alternative splicing has been observed at this locus and two variants, both encoding the same protein, have been identified.</p> <p>Alias Symbols: MGC1774</p> <p>Protein Interaction Partner: HN1L, KRTAP4-12, CLCF1, CRLF1, PLSCR1, APPBP2, IL6ST, LIFR, CNTF,</p> <p>Protein Size: 372</p>
Molecular Weight:	41 kDa
Gene ID:	1271
NCBI Accession:	<a href="#">NM_001842</a> , <a href="#">NP_001833</a>
UniProt:	<a href="#">P26992</a>
Pathways:	<a href="#">JAK-STAT Signaling</a> , <a href="#">Feeding Behaviour</a>

## Application Details

Application Notes:	Optimal working dilutions should be determined experimentally by the investigator.
Comment:	Antigen size: 372 AA
Restrictions:	For Research Use only

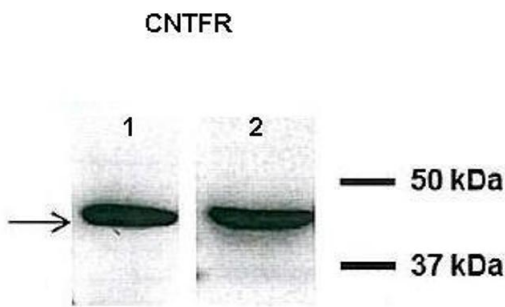
## Handling

Format:	Liquid
Concentration:	Lot specific
Buffer:	Liquid. Purified antibody supplied in 1x PBS buffer with 0.09 % (w/v) sodium azide and 2 % sucrose.
Preservative:	Sodium azide

Handling

Precaution of Use:	This product contains Sodium azide: a POISONOUS AND HAZARDOUS SUBSTANCE which should be handled by trained staff only.
Handling Advice:	Avoid repeated freeze-thaw cycles.
Storage:	-20 °C
Storage Comment:	For short term use, store at 2-8°C up to 1 week. For long term storage, store at -20°C in small aliquots to prevent freeze-thaw cycles.

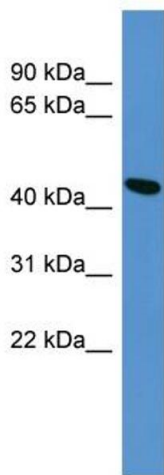
Images



Western Blotting

Image 1. A549, H441

See Immunoblot 2 Data and customer Feedback for more Information



Western Blotting

Image 2. WB Suggested Anti-CNTFR Antibody Titration: 0.2-1 ug/ml ELISA Titer: 1:62500 Positive Control: HepG2 cell lysate