

Datasheet for ABIN2774284
anti-MFI2 antibody (C-Term)[Go to Product page](#)

3 Images

Overview

Quantity:	100 µL
Target:	MFI2
Binding Specificity:	C-Term
Reactivity:	Human, Mouse, Rat, Horse, Dog, Rabbit, Cow, Pig
Host:	Rabbit
Clonality:	Polyclonal
Conjugate:	This MFI2 antibody is un-conjugated
Application:	Western Blotting (WB), Immunofluorescence (IF)

Product Details

Immunogen:	The immunogen is a synthetic peptide directed towards the C terminal region of human MFI2
Sequence:	CVPVNNPKNY PSSLCALCVG DEQGRNKC VG NSQERYYG YR GAFRCLVENA
Predicted Reactivity:	Cow: 100%, Dog: 79%, Horse: 93%, Human: 100%, Mouse: 86%, Pig: 100%, Rabbit: 93%, Rat: 86%
Characteristics:	This is a rabbit polyclonal antibody against MFI2. It was validated on Western Blot.
Purification:	Affinity Purified

Target Details

Target:	MFI2
Alternative Name:	MFI2 (MFI2 Products)
Background:	MFI2 is a cell-surface glycoprotein found on melanoma cells. The protein shares sequence

Target Details

similarity and iron-binding properties with members of the transferrin superfamily. The importance of the iron binding function has not yet been identified.

Alias Symbols: CD228, FLJ38863, MAP97, MGC4856, MTF1

Protein Interaction Partner: NOTCH2NL, HPGDS, PDIA3, DERL2, DERL3, DERL1,

Protein Size: 738

Molecular Weight: 78 kDa

Gene ID: 4241

NCBI Accession: [NM_005929](#), [NP_005920](#)

UniProt: [P08582](#)

Pathways: [Transition Metal Ion Homeostasis](#), [Cell-Cell Junction Organization](#)

Application Details

Application Notes: Optimal working dilutions should be determined experimentally by the investigator.

Comment: Antigen size: 738 AA

Restrictions: For Research Use only

Handling

Format: Liquid

Concentration: Lot specific

Buffer: Liquid. Purified antibody supplied in 1x PBS buffer with 0.09 % (w/v) sodium azide and 2 % sucrose.

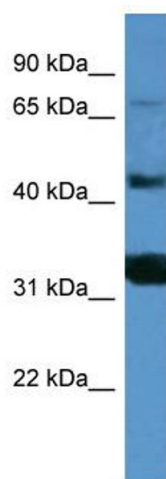
Preservative: Sodium azide

Precaution of Use: This product contains Sodium azide: a POISONOUS AND HAZARDOUS SUBSTANCE which should be handled by trained staff only.

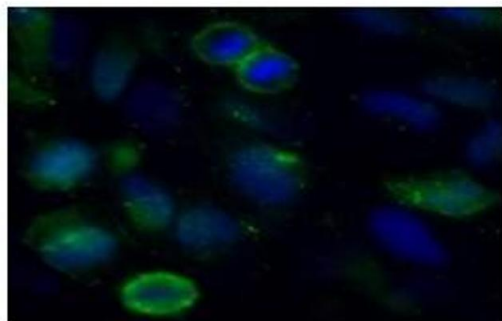
Handling Advice: Avoid repeated freeze-thaw cycles.

Storage: -20 °C

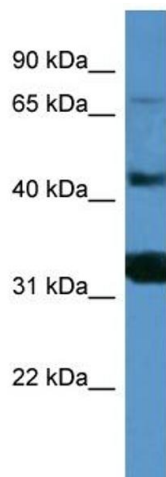
Storage Comment: For short term use, store at 2-8°C up to 1 week. For long term storage, store at -20°C in small aliquots to prevent freeze-thaw cycles.



MFI2



Green: MFI2
Blue: DAPI



Rabbit Anti-MFI2 Antibody
Catalog Number: ARP60335
Lot Number: QC31216
Lane: HepG2 Cell Lysate

Antibody Titration: 1.0 µg/ml
Gel Concentration: 12%

Western Blotting

Image 1. WB Suggested Anti-MFI2 Antibody Titration: 0.2-1 µg/ml

ELISA Titer: 1:312500

Positive Control: HepG2 cell lysate

Immunofluorescence

Image 2. Sample Type: HeLa cells

Primary Antibody Dilution: 1:50

Secondary Antibody: Goat anti-rabbit-Alexa Fluor 488

Secondary Antibody Dilution: 1:1000

Color/Signal Descriptions: Green: MFI2 Blue: DAPI

Gene Name: MFI2

Submitted by: COCOLA Cinzia, Stem Cell Biology and Cancer Research Unit

Western Blotting

Image 3. WB Suggested Anti-MFI2

Antibody Titration: 0.2-1 µg/mL ELISA Titer: 1:12500

Positive Control: HepG2 cell lysate