

Datasheet for ABIN2774285

anti-SH2D1A antibody (Middle Region)



[Go to Product page](#)

1 Image

Overview

Quantity:	100 µL
Target:	SH2D1A
Binding Specificity:	Middle Region
Reactivity:	Human, Mouse, Rat, Pig, Cow, Horse, Rabbit, Dog, Zebrafish (Danio rerio)
Host:	Rabbit
Clonality:	Polyclonal
Conjugate:	This SH2D1A antibody is un-conjugated
Application:	Western Blotting (WB)

Product Details

Immunogen:	The immunogen is a synthetic peptide directed towards the middle region of Human SH2D1A
Sequence:	YTYRVSQTET GSWSAETAPG VHKRYFRKIK NLISAFQKPD QGIVIPQLQYP
Predicted Reactivity:	Cow: 100%, Dog: 100%, Horse: 100%, Human: 100%, Mouse: 100%, Pig: 100%, Rabbit: 100%, Rat: 100%, Zebrafish: 90%
Characteristics:	This is a rabbit polyclonal antibody against SH2D1A. It was validated on Western Blot.
Purification:	Affinity Purified

Target Details

Target:	SH2D1A
Alternative Name:	SH2D1A (SH2D1A Products)

Target Details

Background:	<p>SH2D1A is a protein that plays a major role in the bidirectional stimulation of T and B cells. It associates with the signaling lymphocyte-activation molecule, thereby acting as an inhibitor of this transmembrane protein by blocking the recruitment of the SH2-domain-containing signal-transduction molecule SHP-2 to its docking site. This protein can also bind to other related surface molecules that are expressed on activated T, B and NK cells, thereby modifying signal transduction pathways in these cells. Mutations in SH2D1A gene cause lymphoproliferative syndrome X-linked type 1 or Duncan disease, a rare immunodeficiency characterized by extreme susceptibility to infection with Epstein-Barr virus, with symptoms including severe mononucleosis and malignant lymphoma.</p> <p>Protein Interaction Partner: LHX4, TNK2, UBC, LYN, MAPK11, MAPK1, ERBB3, EGFR, MAPK14, CD244, ELAVL1, SLAMF7, SLAMF6, ARHGEF7, CD84, SLAMF1, DOK1, FYB, LY9, ARHGEF6, LCK, FYN, GRB2,</p> <p>Protein Size: 125</p>
-------------	--

Molecular Weight:	13 kDa
-------------------	--------

Gene ID:	4068
----------	------

Pathways:	Regulation of Leukocyte Mediated Immunity , Positive Regulation of Immune Effector Process
-----------	--

Application Details

Application Notes:	Optimal working dilution should be determined by the investigator.
--------------------	--

Restrictions:	For Research Use only
---------------	-----------------------

Handling

Format:	Liquid
---------	--------

Concentration:	1 mg/mL
----------------	---------

Buffer:	Liquid. Purified antibody supplied in 1x PBS buffer with 0.09 % (w/v) sodium azide and 2 % sucrose.
---------	---

Preservative:	Sodium azide
---------------	--------------

Precaution of Use:	This product contains Sodium azide: a POISONOUS AND HAZARDOUS SUBSTANCE which should be handled by trained staff only.
--------------------	--

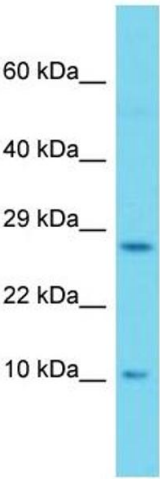
Handling Advice:	Avoid repeat freeze-thaw cycles.
------------------	----------------------------------

Storage:	-20 °C
----------	--------

Handling

Storage Comment: For short term use, store at 2-8°C up to 1 week. For long term storage, store at -20°C in small aliquots to prevent freeze-thaw cycles.

Images



Western Blotting

Image 1.