

Datasheet for ABIN2774309
anti-ASL antibody (C-Term)

2 Images

[Go to Product page](#)

Overview

| | |
|----------------------|---|
| Quantity: | 100 µL |
| Target: | ASL |
| Binding Specificity: | C-Term |
| Reactivity: | Human, Mouse, Rat, Cow, Zebrafish (Danio rerio), Guinea Pig, Horse, Rabbit, Dog, Goat, Saccharomyces cerevisiae |
| Host: | Rabbit |
| Clonality: | Polyclonal |
| Conjugate: | This ASL antibody is un-conjugated |
| Application: | Western Blotting (WB) |

Product Details

| | |
|-----------------------|--|
| Sequence: | MPQKKNPDSL ELIRSKAGRV FGRCAGLLMT LKGLPSTYNK DLQEDKEAVF |
| Predicted Reactivity: | Cow: 100%, Dog: 100%, Goat: 100%, Guinea Pig: 100%, Horse: 100%, Human: 100%, Mouse: 100%, Rabbit: 100%, Rat: 100%, Yeast: 100%, Zebrafish: 100% |
| Characteristics: | This is a rabbit polyclonal antibody against Asl. It was validated on Western Blot. |
| Purification: | Affinity Purified |

Target Details

| | |
|-------------------|--------------------------------------|
| Target: | ASL |
| Alternative Name: | Asl (ASL Products) |

Target Details

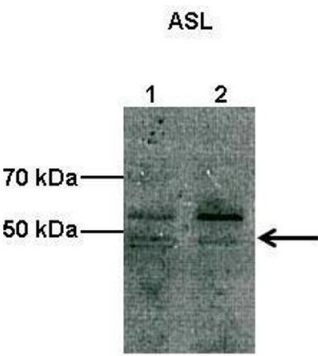
| | |
|-------------------|--|
| Background: | The function of this protein remains unknown. Alias Symbols: 2510006M18Rik Protein Size: 464 |
| Molecular Weight: | 52 kDa |
| Gene ID: | 109900 |
| NCBI Accession: | NM_133768 , NP_598529 |
| UniProt: | Q91YI0 |
| Pathways: | Response to Growth Hormone Stimulus |

Application Details

| | |
|--------------------|--|
| Application Notes: | Optimal working dilutions should be determined experimentally by the investigator. |
| Comment: | Antigen size: 464 AA |
| Restrictions: | For Research Use only |

Handling

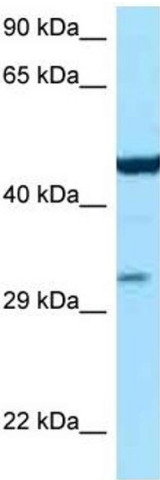
| | |
|--------------------|---|
| Format: | Liquid |
| Concentration: | Lot specific |
| Buffer: | Liquid. Purified antibody supplied in 1x PBS buffer with 0.09 % (w/v) sodium azide and 2 % sucrose. |
| Preservative: | Sodium azide |
| Precaution of Use: | This product contains Sodium azide: a POISONOUS AND HAZARDOUS SUBSTANCE which should be handled by trained staff only. |
| Handling Advice: | Avoid repeated freeze-thaw cycles. |
| Storage: | -20 °C |
| Storage Comment: | For short term use, store at 2-8°C up to 1 week. For long term storage, store at -20°C in small aliquots to prevent freeze-thaw cycles. |



Western Blotting

Image 1. Lanes: Lane1: 10 ug COS-7 cell lysate Lane2: 10 ug bovine aortic endothelial cell lysate Primary Antibody Dilution: 1:1000 Secondary Antibody: Anti-rabbit HRP Secondary Antibody Dilution: 1:2000 Gene Name: Asl Submitted by: Shawn Elms. Georgia Health Science University

See Immunoblot 2 Data and Customer Feedback for more Information



Western Blotting

Image 2. WB Suggested Anti-Asl Antibody Titration: 1.0 ug/ml Positive Control: Mouse Liver