

Datasheet for ABIN2774315
anti-RAB2A antibody (C-Term)[Go to Product page](#)

2 Images

Overview

Quantity:	100 µL
Target:	RAB2A
Binding Specificity:	C-Term
Reactivity:	Human, Mouse, Rat, Dog, Rabbit, Horse, Cow, Goat, Guinea Pig, Zebrafish (Danio rerio)
Host:	Rabbit
Clonality:	Polyclonal
Conjugate:	This RAB2A antibody is un-conjugated
Application:	Western Blotting (WB)

Product Details

Sequence:	GNKSDLESRR EVKKEEGEAF AREHGLIFME TSAKTASNVE EAFINTAKEI
Predicted Reactivity:	Cow: 100%, Dog: 100%, Goat: 100%, Guinea Pig: 100%, Horse: 100%, Human: 100%, Mouse: 100%, Rabbit: 100%, Rat: 100%, Zebrafish: 100%
Characteristics:	This is a rabbit polyclonal antibody against RAB2A. It was validated on Western Blot.
Purification:	Affinity Purified

Target Details

Target:	RAB2A
Alternative Name:	RAB2A (RAB2A Products)
Background:	Members of the Rab protein family are nontransforming monomeric GTP-binding proteins of

Target Details

the Ras superfamily that contain 4 highly conserved regions involved in GTP binding and hydrolysis. Rabs are prenylated, membrane-bound proteins involved in vesicular fusion and trafficking. The mammalian RAB proteins show striking similarities to the *S. cerevisiae* YPT1 and SEC4 proteins, Ras-related GTP-binding proteins involved in the regulation of secretion.

Alias Symbols: RAB2, LHX

Protein Interaction Partner: FAM71C, FAM114A1, STAMBPL1, BLZF1, UBC, ICA1, GOLGA2, RPA3, RPA2, RPA1, CBFB, Arhgdib, ATF2, SUMO2, ERLIN2, HNRNPA0, LAMTOR3, CTSA, ILF3, FLOT2, TBC1D25, MAPKAPK3, RGS2, MAPK6, RBSN, GORASP2, GDI2, PRKCI, GAPDH,

Protein Size: 212

Molecular Weight:	23 kDa
-------------------	--------

Gene ID:	5862
----------	------

NCBI Accession:	NM_002865 , NP_002856
-----------------	---

UniProt:	P61019
----------	------------------------

Pathways:	SARS-CoV-2 Protein Interactome
-----------	--

Application Details

Application Notes:	Optimal working dilutions should be determined experimentally by the investigator.
--------------------	--

Comment:	Antigen size: 212 AA
----------	----------------------

Restrictions:	For Research Use only
---------------	-----------------------

Handling

Format:	Liquid
---------	--------

Concentration:	Lot specific
----------------	--------------

Buffer:	Liquid. Purified antibody supplied in 1x PBS buffer with 0.09 % (w/v) sodium azide and 2 % sucrose.
---------	---

Preservative:	Sodium azide
---------------	--------------

Precaution of Use:	This product contains Sodium azide: a POISONOUS AND HAZARDOUS SUBSTANCE which should be handled by trained staff only.
--------------------	--

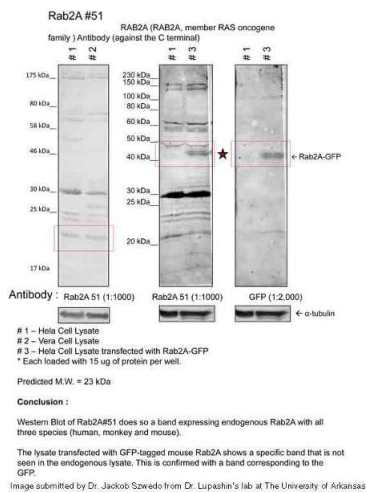
Handling Advice:	Avoid repeated freeze-thaw cycles.
------------------	------------------------------------

Storage:	-20 °C
----------	--------

Handling

Storage Comment: For short term use, store at 2-8°C up to 1 week. For long term storage, store at -20°C in small aliquots to prevent freeze-thaw cycles.

Images



Western Blotting

Image 1. Sample Type: 1. Human Cervical Cancer Cell Lysate (15ug)
2. Monkey Fibroblast Cell Lysate (15ug)
3. Human Cervical Cancer Cell transfected with mouse Rab2A-GFP (15ug)

Primary Dilution: 1:1000

Secondary Antibody: goat anti-Rabbit

Secondary Dilution: 1:40,000

Image Submitted by: Dr. Jakob Szewedo, Dr. Lupashin's Lab
University of Arkansas for Medical Sciences

Western Blotting

Image 2.

