

Datasheet for ABIN2774322  
**anti-RRS1 antibody (C-Term)**[Go to Product page](#)

## 2 Images

## Overview

Quantity:	100 µL
Target:	RRS1
Binding Specificity:	C-Term
Reactivity:	Human, Rat, Mouse, Dog, Pig, Cow, Horse, Guinea Pig, Rabbit
Host:	Rabbit
Clonality:	Polyclonal
Conjugate:	This RRS1 antibody is un-conjugated
Application:	Western Blotting (WB)

## Product Details

Sequence:	DQEAAKRRK MSQKGKRKGG RQGPGGKRKG GPPSQGGKRK GGLGGKMNSG
Predicted Reactivity:	Cow: 93%, Dog: 85%, Guinea Pig: 93%, Horse: 100%, Human: 100%, Mouse: 86%, Pig: 100%, Rabbit: 85%, Rat: 100%
Characteristics:	This is a rabbit polyclonal antibody against RRS1. It was validated on Western Blot.
Purification:	Affinity Purified

## Target Details

Target:	RRS1
Alternative Name:	RRS1 ( <a href="#">RRS1 Products</a> )
Background:	RRS1 is involved in ribosome biogenesis.

## Target Details

Alias Symbols: KIAA0112

Protein Interaction Partner: APPBP2, UBC, ADARB1, LIN28A, NOLC1, DDX21, U2AF1, TPR, RPS7, RPS6, RPS4X, RPL19, RPL18A, RPL11, RPL7, RPL6, RPL5, RANBP2, NOP2, NHP2L1, NFIA, FTSJ3, NIFK, PRPF40A, NOP58, GNL3, RSL1D1, ADNP, NCSTN, ACIN1, U2AF2, PSIP1, DIDO1, EBNA1BP2, NOP56, MYBBP1A, RBM

Protein Size: 365

Molecular Weight: 40 kDa

Gene ID: 23212

NCBI Accession: [NM\\_015169](#), [NP\\_055984](#)

UniProt: [Q15050](#)

## Application Details

Application Notes: Optimal working dilutions should be determined experimentally by the investigator.

Comment: Antigen size: 365 AA

Restrictions: For Research Use only

## Handling

Format: Liquid

Concentration: Lot specific

Buffer: Liquid. Purified antibody supplied in 1x PBS buffer with 0.09 % (w/v) sodium azide and 2 % sucrose.

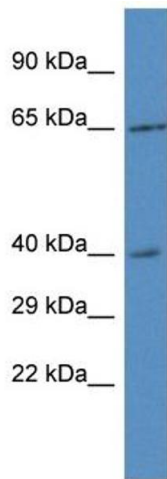
Preservative: Sodium azide

Precaution of Use: This product contains Sodium azide: a POISONOUS AND HAZARDOUS SUBSTANCE which should be handled by trained staff only.

Handling Advice: Avoid repeated freeze-thaw cycles.

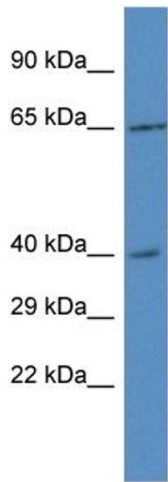
Storage: -20 °C

Storage Comment: For short term use, store at 2-8°C up to 1 week. For long term storage, store at -20°C in small aliquots to prevent freeze-thaw cycles.



Western Blotting

**Image 1.** WB Suggested Anti-RRS1 Antibody Titration: 1.0 µg/mL  
Positive Control: 293T Whole Cell  
RRS1 is supported by BioGPS gene expression data to be expressed in HEK293T



Rabbit Anti-RRS1 Antibody  
Catalog Number: ARP61752  
Lot Number: QC32418  
Lane: 293T Cell Lysate

Antibody Titration: 1.0 µg/ml  
Gel Concentration: 12%

Western Blotting

**Image 2.**