

Datasheet for ABIN2774325
anti-MECR antibody (C-Term)[Go to Product page](#)

1 Image

Overview

Quantity:	100 µL
Target:	MECR
Binding Specificity:	C-Term
Reactivity:	Human, Mouse, Rat, Cow, Pig, Dog, Horse, Rabbit, Guinea Pig, Saccharomyces cerevisiae, Zebrafish (Danio rerio)
Host:	Rabbit
Clonality:	Polyclonal
Conjugate:	This MECR antibody is un-conjugated
Application:	Western Blotting (WB)

Product Details

Sequence:	RRPEMKNFFK DMPQPRALN CVGGKSSTEL LRQLARGGTM VTYGGMAKQP
Predicted Reactivity:	Cow: 100%, Dog: 100%, Guinea Pig: 93%, Horse: 100%, Human: 100%, Mouse: 100%, Pig: 100%, Rabbit: 100%, Rat: 100%, Yeast: 100%, Zebrafish: 85%
Characteristics:	This is a rabbit polyclonal antibody against MECR. It was validated on Western Blot.
Purification:	Affinity Purified

Target Details

Target:	MECR
Alternative Name:	MECR (MECR Products)

Target Details

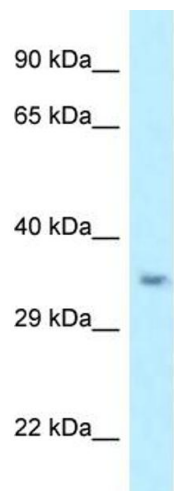
Background:	<p>MECR catalyzes the reduction of trans-2-enoyl-CoA to acyl-CoA with chain length from C6 to C16 in an NADPH-dependent manner with preference to medium chain length substrate. It may have a role in the mitochondrial synthesis of fatty acids.</p> <p>Alias Symbols: CGI-63, FASN2B, NRBF1</p> <p>Protein Interaction Partner: UBC, THRB, RARA, HNF4A, RXRA, PPARA,</p> <p>Protein Size: 297</p>
Molecular Weight:	32 kDa
Gene ID:	51102
NCBI Accession:	NM_001024732 , NP_001019903

Application Details

Application Notes:	Optimal working dilutions should be determined experimentally by the investigator.
Comment:	Antigen size: 297 AA
Restrictions:	For Research Use only

Handling

Format:	Liquid
Concentration:	Lot specific
Buffer:	Liquid. Purified antibody supplied in 1x PBS buffer with 0.09 % (w/v) sodium azide and 2 % sucrose.
Preservative:	Sodium azide
Precaution of Use:	This product contains Sodium azide: a POISONOUS AND HAZARDOUS SUBSTANCE which should be handled by trained staff only.
Handling Advice:	Avoid repeated freeze-thaw cycles.
Storage:	-20 °C
Storage Comment:	For short term use, store at 2-8°C up to 1 week. For long term storage, store at -20°C in small aliquots to prevent freeze-thaw cycles.



Rabbit Anti-MECR Antibody
Catalog Number: ARP61845
Lot Number: QC32701
Lane: U937 Cell Lysate

Antibody Titration: 1.0µg/ml
Gel Concentration: 12%

Western Blotting

Image 1.