



[Go to Product page](#)

Datasheet for ABIN2774351

anti-CCDC68 antibody (Middle Region)

1 Image

Overview

Quantity:	100 µL
Target:	CCDC68
Binding Specificity:	Middle Region
Reactivity:	Human, Rat, Dog, Cow
Host:	Rabbit
Clonality:	Polyclonal
Conjugate:	This CCDC68 antibody is un-conjugated
Application:	Western Blotting (WB)

Product Details

Sequence:	EAGAAALRNV AQRLFENYQT QSEEVRRKKQE DSKQLLQVNK LEKEQKQKQH
Predicted Reactivity:	Cow: 90%, Dog: 77%, Human: 100%, Rat: 100%
Characteristics:	This is a rabbit polyclonal antibody against CCDC68. It was validated on Western Blot.
Purification:	Affinity Purified

Target Details

Target:	CCDC68
Alternative Name:	CCDC68 (CCDC68 Products)
Background:	The function of this protein remains unknown. Alias Symbols: FLJ25368, SE57-1

Target Details

Protein Interaction Partner: TFIP11, RPS21, RPSA,
Protein Size: 335

Molecular Weight: 37 kDa

Gene ID: 80323

NCBI Accession: [NM_025214](#), [NP_079490](#)

UniProt: [Q9H2F9](#)

Application Details

Application Notes: Optimal working dilutions should be determined experimentally by the investigator.

Comment: Antigen size: 335 AA

Restrictions: For Research Use only

Handling

Format: Liquid

Concentration: Lot specific

Buffer: Liquid. Purified antibody supplied in 1x PBS buffer with 0.09 % (w/v) sodium azide and 2 % sucrose.

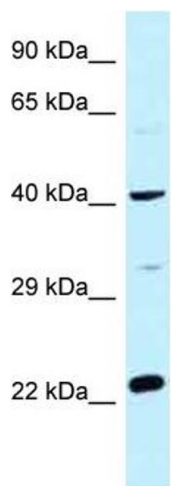
Preservative: Sodium azide

Precaution of Use: This product contains Sodium azide: a POISONOUS AND HAZARDOUS SUBSTANCE which should be handled by trained staff only.

Handling Advice: Avoid repeated freeze-thaw cycles.

Storage: -20 °C

Storage Comment: For short term use, store at 2-8°C up to 1 week. For long term storage, store at -20°C in small aliquots to prevent freeze-thaw cycles.



Rabbit Anti-CCDC68 Antibody
Catalog Number: ARP62778
Lot Number: QC33380
Lane: Fetal Heart Lysate

Antibody Titration: 1.0µg/ml
Gel Concentration: 12%

Western Blotting

Image 1.