



[Go to Product page](#)

Datasheet for ABIN2774364  
**anti-ARMCX5 antibody (C-Term)**

1 Image

Overview

|                      |  |
|----------------------|--|
| Quantity:            | 100 µL                                     |
| Target:              | ARMCX5                                     |
| Binding Specificity: | C-Term                                     |
| Reactivity:          | Human, Cow, Dog, Horse, Mouse, Rabbit, Rat |
| Host:                | Rabbit                                     |
| Clonality:           | Polyclonal                                 |
| Conjugate:           | This ARMCX5 antibody is un-conjugated      |
| Application:         | Western Blotting (WB)                      |

Product Details

|                       |  |
|-----------------------|--|
| Immunogen:            | The immunogen is a synthetic peptide directed towards the C-terminal region of Human ARM CX5 |
| Sequence:             | QFKTKAKLFT KEKFTKSELI SIFQEAKQFG QKLQDLAEHS DPEVRDKVIR                                       |
| Predicted Reactivity: | Cow: 100%, Dog: 100%, Horse: 100%, Human: 100%, Mouse: 79%, Rabbit: 93%, Rat: 79%            |
| Characteristics:      | This is a rabbit polyclonal antibody against ARM CX5. It was validated on Western Blot.      |
| Purification:         | Affinity Purified  |

Target Details

|                   |  |
|-------------------|--|
| Target:           | ARMCX5                                     |
| Alternative Name: | ARMCX5 ( <a href="#">ARMCX5 Products</a> ) |

## Target Details

---

Background: The function of this protein remains unknown.  
Alias Symbols: -  
Protein Interaction Partner: APPBP2, DCP2, UBC,  
Protein Size: 558

---

Molecular Weight: 61 kDa

---

Gene ID: 64860

---

NCBI Accession: [NM\\_022838](#), [NP\\_073749](#)

---

UniProt: [Q6P1M9](#)

---

## Application Details

---

Restrictions: For Research Use only

---

## Handling

---

Format: Liquid

---

Concentration: 1 mg/mL

---

Buffer: Liquid. Purified antibody supplied in 1x PBS buffer with 0.09 % (w/v) sodium azide and 2 % sucrose.

---

Preservative: Sodium azide

---

Precaution of Use: This product contains Sodium azide: a POISONOUS AND HAZARDOUS SUBSTANCE which should be handled by trained staff only.

---

Handling Advice: Avoid repeat freeze-thaw cycles.

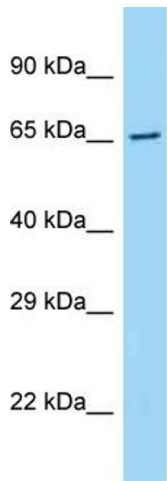
---

Storage: -20 °C

---

Storage Comment: For short term use, store at 2-8°C up to 1 week. For long term storage, store at -20°C in small aliquots to prevent freeze-thaw cycles.

---



Host: Rabbit  
Target Name: ARMCX5  
Sample Tissue: Fetal Liver Lysate  
Antibody Dilution: 1.0µg/ml

### Western Blotting

**Image 1.** Host: Rabbit Target Name: ARMCX5 Sample Type: Fetal Liver lysates Antibody Dilution: 1.0ug/ml