



[Go to Product page](#)

Datasheet for ABIN2774378

anti-Phosphoglucomutase 2 antibody (C-Term)

1 Image

Overview

Quantity:	100 µL
Target:	Phosphoglucomutase 2 (PGM2)
Binding Specificity:	C-Term
Reactivity:	Human, Mouse, Rat, Zebrafish (Danio rerio), Cow, Dog, Guinea Pig, Horse, Rabbit
Host:	Rabbit
Clonality:	Polyclonal
Conjugate:	This Phosphoglucomutase 2 antibody is un-conjugated
Application:	Western Blotting (WB)

Product Details

Sequence:	AIRDLTTGYD DSQPKKAVL PTSKSSQMIT FTFANGGVAT MRTSGTEPKI
Predicted Reactivity:	Cow: 79%, Dog: 100%, Guinea Pig: 100%, Horse: 100%, Human: 100%, Mouse: 100%, Rabbit: 93%, Rat: 93%, Zebrafish: 86%
Characteristics:	This is a rabbit polyclonal antibody against PGM2. It was validated on Western Blot.
Purification:	Affinity Purified

Target Details

Target:	Phosphoglucomutase 2 (PGM2)
Alternative Name:	PGM2 (PGM2 Products)
Background:	PGM2 catalyzes the conversion of the nucleoside breakdown products ribose-1-phosphate and

Target Details

deoxyribose-1-phosphate to the corresponding 5-phosphopentoses. PGM2 may also catalyze the interconversion of glucose-1-phosphate and glucose-6-phosphate. PGM2 has low glucose 1,6-bisphosphate synthase activity.

Alias Symbols: FLJ10983, MSTP006

Protein Interaction Partner: UBC, BAG3, PGM1, ACD, TINF2, POT1, TERF1,

Protein Size: 612

Molecular Weight: 67 kDa

Gene ID: 55276

NCBI Accession: [NM_018290](#), [NP_060760](#)

UniProt: [Q96G03](#)

Pathways: [Cellular Glucan Metabolic Process](#)

Application Details

Application Notes: Optimal working dilutions should be determined experimentally by the investigator.

Comment: Antigen size: 612 AA

Restrictions: For Research Use only

Handling

Format: Liquid

Concentration: Lot specific

Buffer: Liquid. Purified antibody supplied in 1x PBS buffer with 0.09 % (w/v) sodium azide and 2 % sucrose.

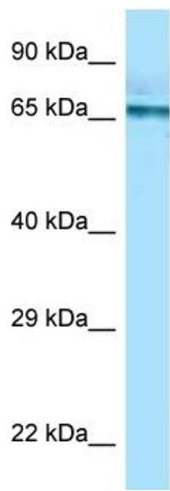
Preservative: Sodium azide

Precaution of Use: This product contains Sodium azide: a POISONOUS AND HAZARDOUS SUBSTANCE which should be handled by trained staff only.

Handling Advice: Avoid repeated freeze-thaw cycles.

Storage: -20 °C

Storage Comment: For short term use, store at 2-8°C up to 1 week. For long term storage, store at -20°C in small aliquots to prevent freeze-thaw cycles.



Rabbit Anti-PGM2 Antibody
Catalog Number: ARP63674
Lot Number: QC34494
Lane: THP-1 Cell Lysate

Antibody Titration: 1.0µg/ml
Gel Concentration: 12%

Western Blotting

Image 1.