

Datasheet for ABIN2774390
anti-RAB1B antibody (C-Term)



[Go to Product page](#)

2 Images

Overview

Quantity:	100 µL
Target:	RAB1B
Binding Specificity:	C-Term
Reactivity:	Human, Rat, Mouse, Cow, Guinea Pig, Horse, Dog
Host:	Rabbit
Clonality:	Polyclonal
Conjugate:	This RAB1B antibody is un-conjugated
Application:	Western Blotting (WB)

Product Details

Sequence:	TSAKNATNVE QAFMTMAAEI KKRMGPGAAS GGERPNLKID STPVKPAGGG
Predicted Reactivity:	Cow: 100%, Dog: 100%, Guinea Pig: 100%, Horse: 100%, Human: 100%, Mouse: 100%, Rat: 100%
Characteristics:	This is a rabbit polyclonal antibody against RAB1B. It was validated on Western Blot.
Purification:	Affinity Purified

Target Details

Target:	RAB1B
Alternative Name:	RAB1B (RAB1B Products)
Background:	Members of the RAB protein family, such as RAB1B, are low molecular mass monomeric GTPases localized on the cytoplasmic surfaces of distinct membrane-bound organelles. RAB1B

Target Details

functions in the early secretory pathway and is essential for vesicle transport between the endoplasmic reticulum (ER) and Golgi.

Alias Symbols: -

Protein Interaction Partner: EED, LSM2, RNH1, HSPD1, BAG3, TOMM40L, UBL4A, UBC, SMARCC2, RAB11B, RAB11A, RAB8A, APP, MICAL3, RUSC2, MICALCL, MICAL1, GOLGA2, CHM, GDI1, VHL,

Protein Size: 201

Molecular Weight: 22 kDa

Gene ID: 81876

NCBI Accession: [NM_030981](#), [NP_112243](#)

UniProt: [Q9H0U4](#)

Application Details

Application Notes: Optimal working dilutions should be determined experimentally by the investigator.

Comment: Antigen size: 201 AA

Restrictions: For Research Use only

Handling

Format: Liquid

Concentration: Lot specific

Buffer: Liquid. Purified antibody supplied in 1x PBS buffer with 0.09 % (w/v) sodium azide and 2 % sucrose.

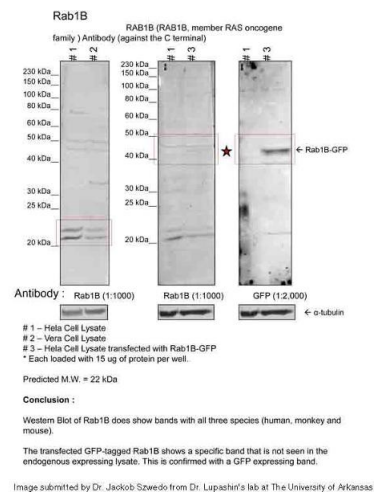
Preservative: Sodium azide

Precaution of Use: This product contains Sodium azide: a POISONOUS AND HAZARDOUS SUBSTANCE which should be handled by trained staff only.

Handling Advice: Avoid repeated freeze-thaw cycles.

Storage: -20 °C

Storage Comment: For short term use, store at 2-8°C up to 1 week. For long term storage, store at -20°C in small aliquots to prevent freeze-thaw cycles.



Western Blotting

Image 1. Sample Type: 1. Human Cervical Cancer Cell Lysate (15ug)

2. Monkey Fibroblast Cell Lysate (15ug)

Primary Dilution: 1:1000

Secondary Antibody: goat anti-Rabbit

Secondary Dilution: 1:40,000

Image Submitted by: Dr. Jakob Szwedo, Dr. Lupashin's Lab
University of Arkansas for Medical Sciences.

Western Blotting

Image 2.



Rabbit Anti-RAB1B Antibody
Catalog Number: ARP64096
Lot Number: QC34812
Lane: Fetal Kidney Lysate

Antibody Titration: 1.0µg/ml
Gel Concentration: 12%