

Datasheet for ABIN2774403  
**anti-PDE6C antibody (C-Term)**



[Go to Product page](#)

1 Image

## Overview

Quantity:	100 µL
Target:	PDE6C
Binding Specificity:	C-Term
Reactivity:	Human
Host:	Rabbit
Clonality:	Polyclonal
Conjugate:	This PDE6C antibody is un-conjugated
Application:	Western Blotting (WB)

## Product Details

Sequence:	LQNNRVEWKS LADEYDAKMK VIEEEAKKQE GGAEKAAEDS GGGDDKKSKT
Predicted Reactivity:	Human: 100%
Characteristics:	This is a rabbit polyclonal antibody against PDE6C. It was validated on Western Blot.
Purification:	Affinity Purified

## Target Details

Target:	PDE6C
Alternative Name:	PDE6C ( <a href="#">PDE6C Products</a> )
Background:	This gene encodes the alpha-prime subunit of cone phosphodiesterase, which is composed of a homodimer of two alpha-prime subunits and 3 smaller proteins of 11, 13, and 15 kDa.

## Target Details

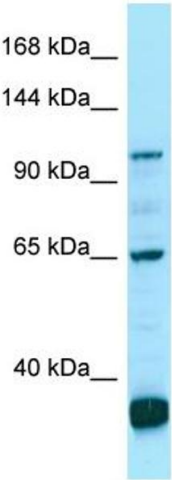
	Mutations in this gene are associated with cone dystrophy type 4 (COD4). Alias Symbols: COD4, PDEA2 Protein Size: 858
Molecular Weight:	99 kDa
Gene ID:	5146
NCBI Accession:	<a href="#">NM_006204</a> , <a href="#">NP_006195</a>
UniProt:	<a href="#">P51160</a>

## Application Details

Application Notes:	Optimal working dilutions should be determined experimentally by the investigator.
Comment:	Antigen size: 858 AA
Restrictions:	For Research Use only

## Handling

Format:	Liquid
Concentration:	Lot specific
Buffer:	Liquid. Purified antibody supplied in 1x PBS buffer with 0.09 % (w/v) sodium azide and 2 % sucrose.
Preservative:	Sodium azide
Precaution of Use:	This product contains Sodium azide: a POISONOUS AND HAZARDOUS SUBSTANCE which should be handled by trained staff only.
Handling Advice:	Avoid repeated freeze-thaw cycles.
Storage:	-20 °C
Storage Comment:	For short term use, store at 2-8°C up to 1 week. For long term storage, store at -20°C in small aliquots to prevent freeze-thaw cycles.



Rabbit Anti-PDE6C Antibody  
Catalog Number: ARP64622  
Lot Number: QC35237  
Lane: OVCAR-3 Cell Lysate  
  
Antibody Titration: 1.0µg/ml  
Gel Concentration: 6-18%

Western Blotting

Image 1.