

Datasheet for ABIN2774427  
**anti-Keratin 71 antibody (Middle Region)**[Go to Product page](#)

## 1 Image

## Overview

|                      |  |
|----------------------|--|
| Quantity:            | 100 µL   |
| Target:              | Keratin 71 (KRT71)                                     |
| Binding Specificity: | Middle Region  |
| Reactivity:          | Human, Mouse, Cow, Dog, Horse, Pig, Rabbit, Rat, Sheep |
| Host:                | Rabbit   |
| Clonality:           | Polyclonal   |
| Conjugate:           | This Keratin 71 antibody is un-conjugated              |
| Application:         | Western Blotting (WB)                                  |

## Product Details

|                       |  |
|-----------------------|--|
| Immunogen:            | The immunogen is a synthetic peptide directed towards the middle region of Human KRT71                 |
| Sequence:             | LETLSGDRVR LDSELRNVRD VVEDYKKRYE EEINKRTAAE NEFVLLKKDV   |
| Predicted Reactivity: | Cow: 100%, Dog: 93%, Horse: 93%, Human: 100%, Mouse: 93%, Pig: 93%, Rabbit: 100%, Rat: 93%, Sheep: 93% |
| Characteristics:      | This is a rabbit polyclonal antibody against KRT71. It was validated on Western Blot.                  |
| Purification:         | Affinity Purified  |

## Target Details

|                   |  |
|-------------------|--|
| Target:           | Keratin 71 (KRT71)                       |
| Alternative Name: | KRT71 ( <a href="#">KRT71 Products</a> ) |

## Target Details

|             |   |
|-------------|---|
| Background: | <p>Keratins are intermediate filament proteins responsible for the structural integrity of epithelial cells and are subdivided into epithelial keratins and hair keratins. This gene encodes a protein that is expressed in the inner root sheath of hair follicles. The type II keratins are clustered in a region of chromosome 12q13.</p> <p>Alias Symbols: K6IRS1, KRT6IRS, KRT6IRS1, MGC119390, MGC119391</p> <p>Protein Interaction Partner: KRT15, KRT13, KRT40, KRT38, KRT31, UBC, EIF4A3, COPS5, CUL2, CUL3, CUL4B,</p> <p>Protein Size: 523</p> |
|-------------|---|

|                   |        |
|-------------------|--------|
| Molecular Weight: | 57 kDa |
|-------------------|--------|

|          |        |
|----------|--------|
| Gene ID: | 112802 |
|----------|--------|

|                 |   |
|-----------------|---|
| NCBI Accession: | <a href="#">NM_033448</a> , <a href="#">NP_258259</a> |
|-----------------|---|

|          |                        |
|----------|------------------------|
| UniProt: | <a href="#">Q3SY84</a> |
|----------|------------------------|

## Application Details

|                    |  |
|--------------------|--|
| Application Notes: | Optimal working dilutions should be determined experimentally by the investigator. |
|--------------------|--|

|          |                      |
|----------|----------------------|
| Comment: | Antigen size: 523 AA |
|----------|----------------------|

|               |                       |
|---------------|-----------------------|
| Restrictions: | For Research Use only |
|---------------|-----------------------|

## Handling

|         |        |
|---------|--------|
| Format: | Liquid |
|---------|--------|

|                |              |
|----------------|--------------|
| Concentration: | Lot specific |
|----------------|--------------|

|         |   |
|---------|---|
| Buffer: | Liquid. Purified antibody supplied in 1x PBS buffer with 0.09 % (w/v) sodium azide and 2 % sucrose. |
|---------|---|

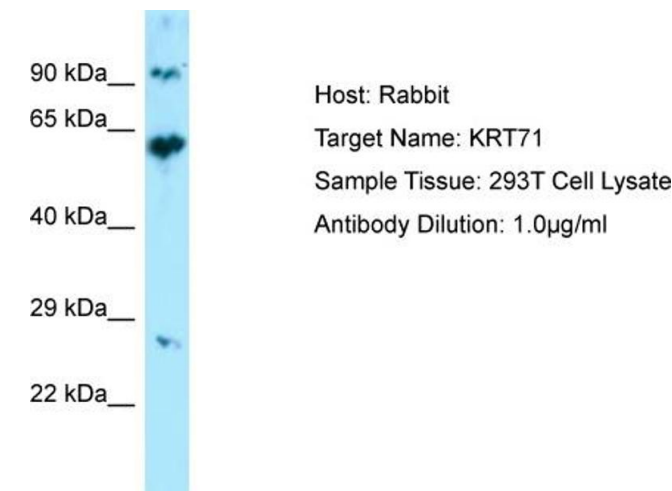
|               |              |
|---------------|--------------|
| Preservative: | Sodium azide |
|---------------|--------------|

|                    |  |
|--------------------|--|
| Precaution of Use: | This product contains Sodium azide: a POISONOUS AND HAZARDOUS SUBSTANCE which should be handled by trained staff only. |
|--------------------|--|

|                  |                                    |
|------------------|------------------------------------|
| Handling Advice: | Avoid repeated freeze-thaw cycles. |
|------------------|------------------------------------|

|          |        |
|----------|--------|
| Storage: | -20 °C |
|----------|--------|

|                  |   |
|------------------|---|
| Storage Comment: | For short term use, store at 2-8°C up to 1 week. For long term storage, store at -20°C in small aliquots to prevent freeze-thaw cycles. |
|------------------|---|



Western Blotting

Image 1.