

Datasheet for ABIN2774430
anti-NPBWR2 antibody (N-Term)[Go to Product page](#)

1 Image

Overview

Quantity:	100 µL
Target:	NPBWR2
Binding Specificity:	N-Term
Reactivity:	Human
Host:	Rabbit
Clonality:	Polyclonal
Conjugate:	This NPBWR2 antibody is un-conjugated
Application:	Western Blotting (WB)

Product Details

Immunogen:	The immunogen is a synthetic peptide directed towards the N-terminal region of Human NPBWR2
Sequence:	LPTMGANVSQ DNGTGHNATF SEPLPFLYVL LPAVYSGICA VGLTGNTAVI
Predicted Reactivity:	Human: 100%
Characteristics:	This is a rabbit polyclonal antibody against NPBWR2. It was validated on Western Blot.
Purification:	Affinity Purified

Target Details

Target:	NPBWR2
Alternative Name:	NPBWR2 (NPBWR2 Products)

Target Details

Background:	<p>The protein encoded by this gene is an integral membrane protein and G protein-coupled receptor. The encoded protein is similar in sequence to another G protein-coupled receptor (GPR7), and it is structurally similar to opioid and somatostatin receptors. This protein binds neuropeptides B and W. This gene is intronless and is expressed primarily in the frontal cortex of the brain.</p> <p>Alias Symbols: GPR8</p> <p>Protein Interaction Partner: NOTCH2NL, KRTAP10-3, KRTAP10-9, KRTAP10-7, KRT40, BOLL, PNMA1, PSMA3, KRT31, KRTAP5-9, NPW, NPB,</p> <p>Protein Size: 333</p>
Molecular Weight:	37 kDa
Gene ID:	2832
NCBI Accession:	NM_005286 , NP_005277
UniProt:	P48146

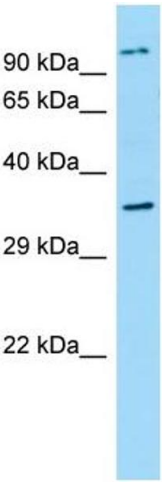
Application Details

Application Notes:	Optimal working dilutions should be determined experimentally by the investigator.
Comment:	Antigen size: 333 AA
Restrictions:	For Research Use only

Handling

Format:	Liquid
Concentration:	Lot specific
Buffer:	Liquid. Purified antibody supplied in 1x PBS buffer with 0.09 % (w/v) sodium azide and 2 % sucrose.
Preservative:	Sodium azide
Precaution of Use:	This product contains Sodium azide: a POISONOUS AND HAZARDOUS SUBSTANCE which should be handled by trained staff only.
Handling Advice:	Avoid repeated freeze-thaw cycles.
Storage:	-20 °C
Storage Comment:	For short term use, store at 2-8°C up to 1 week. For long term storage, store at -20°C in small

aliquots to prevent freeze-thaw cycles.



Western Blotting

Image 1. WB Suggested Anti-NPBWR2 Antibody Titration:
1.0 ug/ml Positive Control: Placenta