

Datasheet for ABIN2774439
anti-HTR3E antibody (C-Term)



[Go to Product page](#)

1 Image

Overview

Quantity:	100 µL
Target:	HTR3E
Binding Specificity:	C-Term
Reactivity:	Human, Dog, Rabbit
Host:	Rabbit
Clonality:	Polyclonal
Application:	Western Blotting (WB)

Product Details

Immunogen:	The immunogen is a synthetic peptide directed towards the C-terminal region of Human HTR3E
Sequence:	GPAAELTGG SEWTRAQREH EAQKQHSVEL WLQFSHAMDA MLFRLYLLFM
Predicted Reactivity:	Dog: 77%, Human: 100%, Rabbit: 77%
Characteristics:	This is a rabbit polyclonal antibody against HTR3E. It was validated on Western Blot.
Purification:	Affinity Purified

Target Details

Target:	HTR3E
Alternative Name:	HTR3E (HTR3E Products)
Background:	This locus encodes a 5-hydroxytryptamine (serotonin) receptor subunit. The encoded protein, subunit E, may play a role in neurotransmission in myenteric neurons. Genes encoding subunits

Target Details

C, D and E form a cluster on chromosome 3. Alternatively spliced transcript variants encoding distinct isoforms have been described.

Protein Size: 482

Molecular Weight: 53 kDa

Gene ID: 285242

UniProt: [E9PGF1](#)

Application Details

Restrictions: For Research Use only

Handling

Format: Liquid

Concentration: 1 mg/mL

Buffer: Liquid. Purified antibody supplied in 1x PBS buffer with 0.09 % (w/v) sodium azide and 2 % sucrose.

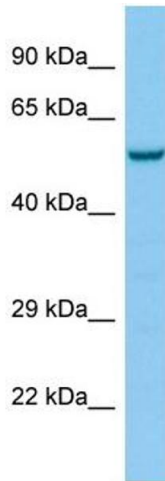
Preservative: Sodium azide

Precaution of Use: This product contains Sodium azide: a POISONOUS AND HAZARDOUS SUBSTANCE which should be handled by trained staff only.

Handling Advice: Avoid repeat freeze-thaw cycles.

Storage: -20 °C

Storage Comment: For short term use, store at 2-8°C up to 1 week. For long term storage, store at -20°C in small aliquots to prevent freeze-thaw cycles.



Western Blotting

Image 1.