

Datasheet for ABIN2774443
anti-RPLP2 antibody (N-Term)



[Go to Product page](#)

1 Image

Overview

Quantity:	100 µL
Target:	RPLP2
Binding Specificity:	N-Term
Reactivity:	Human, Mouse, Rat, Rabbit, Cow, Guinea Pig, Dog, Goat, Horse, Saccharomyces cerevisiae, Zebrafish (Danio rerio)
Host:	Rabbit
Clonality:	Polyclonal
Conjugate:	This RPLP2 antibody is un-conjugated
Application:	Western Blotting (WB)

Product Details

Immunogen:	The immunogen is a synthetic peptide directed towards the N-terminal region of Human RPLP2
Sequence:	MRYVASYLLA ALGGNSSPSA KDIKKILDSV GIEADDDRLN KVISLNGKN
Predicted Reactivity:	Cow: 100%, Dog: 92%, Goat: 79%, Guinea Pig: 100%, Horse: 93%, Human: 100%, Mouse: 100%, Rabbit: 100%, Rat: 100%, Yeast: 79%, Zebrafish: 79%
Characteristics:	This is a rabbit polyclonal antibody against RPLP2. It was validated on Western Blot.
Purification:	Affinity Purified

Target Details

Target:	RPLP2
---------	-------

Target Details

Alternative Name:	RPLP2 (RPLP2 Products)
Background:	<p>Ribosomes, the organelles that catalyze protein synthesis, consist of a small 40S subunit and a large 60S subunit. Together these subunits are composed of 4 RNA species and approximately 80 structurally distinct proteins. This gene encodes a ribosomal phosphoprotein that is a component of the 60S subunit. The protein, which is a functional equivalent of the E. coli L7/L12 ribosomal protein, belongs to the L12P family of ribosomal proteins. It plays an important role in the elongation step of protein synthesis. Unlike most ribosomal proteins, which are basic, the encoded protein is acidic. Its C-terminal end is nearly identical to the C-terminal ends of the ribosomal phosphoproteins P0 and P1. The P2 protein can interact with P0 and P1 to form a pentameric complex consisting of P1 and P2 dimers, and a P0 monomer. The protein is located in the cytoplasm. As is typical for genes encoding ribosomal proteins, there are multiple processed pseudogenes of this gene dispersed through the genome.</p> <p>Alias Symbols: D11S2243E, MGC71408, P2, RPP2, LP2</p> <p>Protein Interaction Partner: TP53, AURKA, TUBGCP4, CEP250, TUBGCP2, CEP57, UBC, TUBG1, MDM2, CNDP2, NANS, NPEPPS, RPL23, FBXO6, YWHAQ, IGSF8, ICAM1, CD81, PAN2, MAPK8, FN1, UBL4A, PA2G4, CTNNB1, HNRNPA3, RPLP0P6, RPS27L, RPL14, UBA52, RPS28, RPS26, RPS25, RPS24, RPS23, RPS21, RPS20,</p> <p>Protein Size: 115</p>
Molecular Weight:	12 kDa
Gene ID:	6181
NCBI Accession:	NM_001004 , NP_000995
UniProt:	P05387

Application Details

Application Notes:	Optimal working dilutions should be determined experimentally by the investigator.
Comment:	Antigen size: 115 AA
Restrictions:	For Research Use only

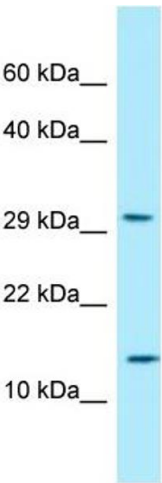
Handling

Format:	Liquid
Concentration:	Lot specific
Buffer:	Liquid. Purified antibody supplied in 1x PBS buffer with 0.09 % (w/v) sodium azide and 2 %

Handling

	sucrose.
Preservative:	Sodium azide
Precaution of Use:	This product contains Sodium azide: a POISONOUS AND HAZARDOUS SUBSTANCE which should be handled by trained staff only.
Handling Advice:	Avoid repeated freeze-thaw cycles.
Storage:	-20 °C
Storage Comment:	For short term use, store at 2-8°C up to 1 week. For long term storage, store at -20°C in small aliquots to prevent freeze-thaw cycles.

Images



Western Blotting

Image 1. WB Suggested Anti-RPLP2 Antibody Titration: 1.0 ug/ml Positive Control: OVCAR-3 Whole Cell RPLP2 is strongly supported by BioGPS gene expression data to be expressed in Human OVCAR3 cells